

CIRCUIT DIAGRAM

P.C.B LAND DIMENSION

GT-TCX89X-HXXX-LX

G-Switch

Operating Force

A=180gf B=250gf
C=100gf D=70gf
E=130gf F=320gf
G=400gf

Switch lifetime (Force)

L05=50,000 Cycles (B, F, G)
L1=100,000 Cycles (A, B)
L3=300,000 Cycles (A, B, C, D, E)
L5=500,000 Cycles (A, B, C, D, E)

Switch Height (mm) A=ØA

H043=4.3 A=3.5 H050=5.0 A=3.5
H055=5.5 A=3.5 H060=6.0 A=3.5
H065=6.5 A=3.5 H070=7.0 A=3.3
H080=8.0 A=3.3 H085=8.5 A=3.3
H090=9.0 A=3.3 H095=9.5 A=3.0
H100=10.0 A=3.0 H105=10.5 A=3.0
H110=11.0 A=3.0 H115=11.5 A=3.0
H120=12.0 A=3.0 H125=12.5 A=3.0
H130=13.0 A=3.0 H135=13.5 A=3.0
H140=14.0 A=3.0 H145=14.5 A=3.0
H150=15.0 A=3.0 H155=15.5 A=3.0
H160=16.0 A=3.0 H165=16.5 A=3.0
H170=17.0 A=3.0 H175=17.5 A=3.0
H180=18.0 A=3.0 H185=18.5 A=3.0
H190=19.0 A=3.0 H195=19.5 A=3.0
H200=20.0 A=3.0 H205=20.5 A=3.0
H210=21.0 A=3.0 ...

Terminal Type

0=DIMA8.5mm
DIMB9.6mm
A=DIMA9.2mm
DIMB10.3mm

G-Switch Specification:

Operating temperature range: -30°C to +85°C
Rating: 50mA, 12V DC
Insulation resistance: 100MΩ min. 100V DC
Dielectric strength: 250V AC for 1 min
Contact resistance: 100mΩ max.
Travel: 0.25±0.1mm

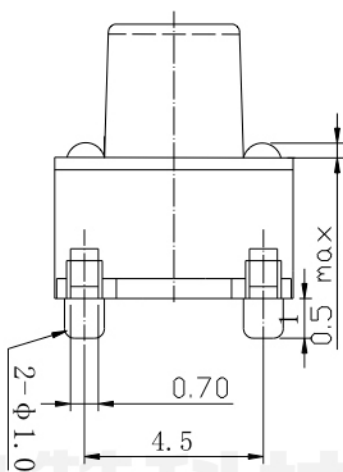
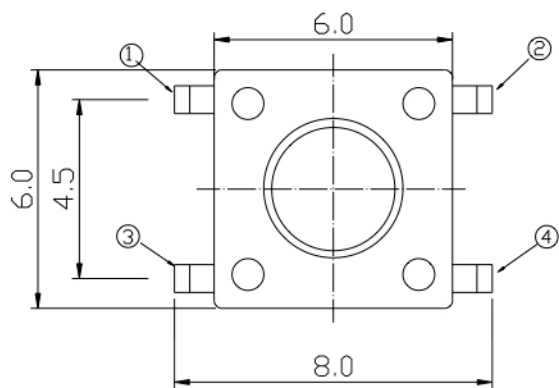


G-Switch Electronic Technology CO.,Ltd.

Unless otherwise specified, Tolerance:
X. ±0.30
X.x ±0.20
X.xx ±0.15
X.xxx ±0.10
Angles ±3°

DESIGN 陈锋枫 DATE 2019.05.29
CHECKED DATE
APPROVED DATE
<http://www.dg-switch.com>
TEL: 0769-82388879

Molde code:
GT-TCX89X-HXXX-LX
REV.: X1 SCALE: 4:1 UNIT: mm
SIZE: A4 SHEET: 1/1



GT-T S089X-HXXX-LX

G-Switch

Operating Force

A=180gf B=250gf
C=100gf D=70gf
E=130gf F=320gf
G=400gf

Switch lifetime (Force)

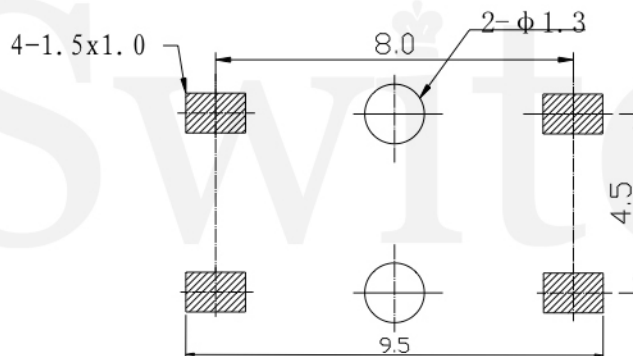
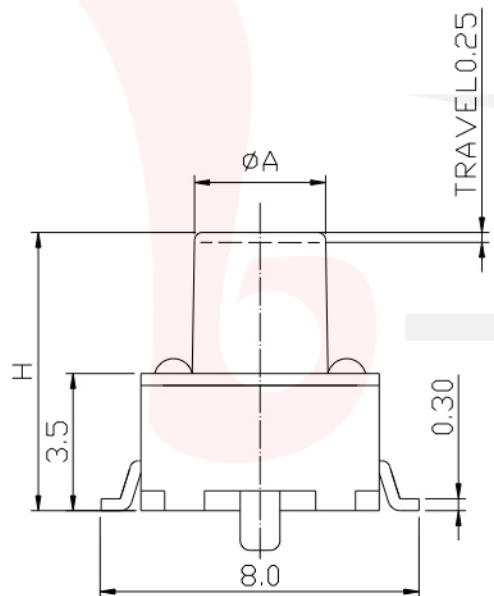
L05=50,000 Cycles (B, F, G)
L1=100,000 Cycles (A, B)
L3=300,000 Cycles (A, B, C, D, E)
L5=500,000 Cycles (A, B, C, D, E)

Switch Height (mm) A=ØA

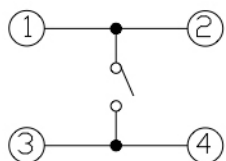
H043=4.3 A=3.5 H050=5.0 A=3.5
H055=5.5 A=3.5 H060=6.0 A=3.5
H065=6.5 A=3.5 H070=7.0 A=3.3
H080=8.0 A=3.3 H085=8.5 A=3.3
H090=9.0 A=3.3 H095=9.5 A=3.0
H100=10.0 A=3.0 H105=10.5 A=3.0
H110=11.0 A=3.0 H115=11.5 A=3.0
H120=12.0 A=3.0 H125=12.5 A=3.0
H130=13.0 A=3.0 H135=13.5 A=3.0
H140=14.0 A=3.0 H145=14.5 A=3.0
H150=15.0 A=3.0 H155=15.5 A=3.0
H160=16.0 A=3.0 H165=16.5 A=3.0
H170=17.0 A=3.0 H175=17.5 A=3.0
H180=18.0 A=3.0 H185=18.5 A=3.0
H190=19.0 A=3.0 H195=19.5 A=3.0
H200=20.0 A=3.0 H205=20.5 A=3.0
H210=21.0 A=3.0 ...

Terminal Type

0=DIMA8.0mm
DIMB9.5mm



P.C.B LAND DIMENSION



CIRCUIT DIAGRAM

G-Switch Specification:

Operating temperature range: -30°C to +85°C

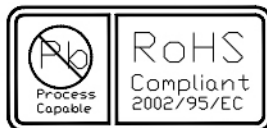
Rating: 50mA, 12V DC

Insulation resistance: 100MΩ min. 100V DC

Dielectric strength: 250V AC for 1 min

Contact resistance: 100mΩ max.

Travel: 0.25 ± 0.1mm



G-Switch Electronic (HongKong)CO.,Ltd.

Unless otherwise specified, Tolerance:
X. ±0.30
X.x ±0.20
X.xx ±0.15
X.xxx ±0.10
Angles ±3°

DESIGN 陈锋枫 DATE 2019.05.29
CHECKED DATE
APPROVED DATE
<http://www.dg-switch.com>
TEL: 0769-82388879

Molde code:
GT-TS089X-HXXX-LX
REV.: X1 SCALE: 4:1 UNIT: mm
SIZE: A4 SHEET: 1/1