

GT-TC171X-H014-LX

G-SWITCH Operating Force

A=160gf
B=250gf
E=400gf

Switch Height (mm)

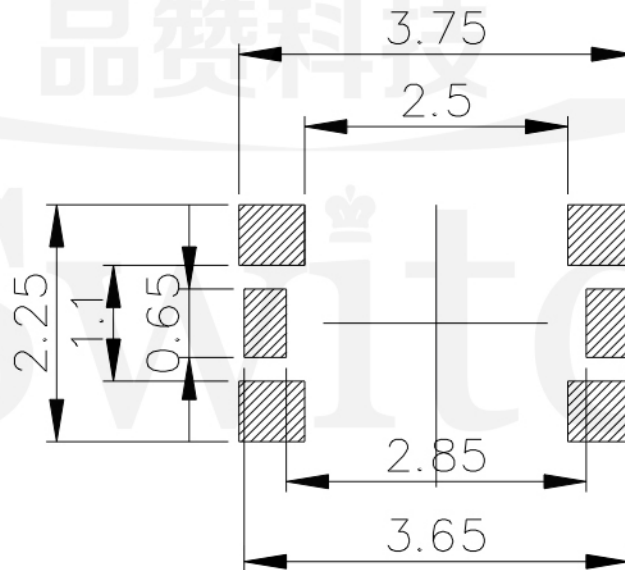
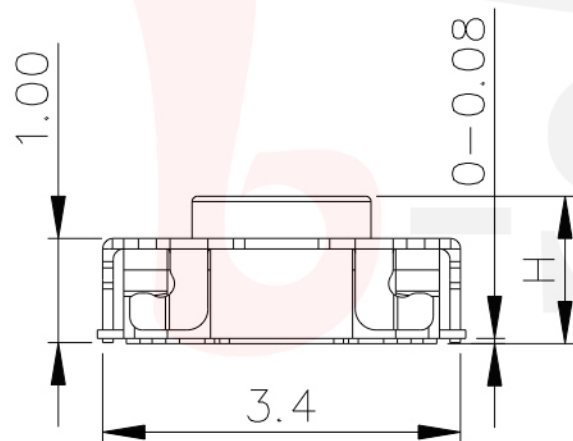
H014=1.4mm

Switch lifetime (Force)

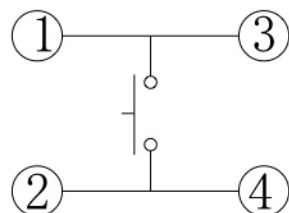
L05=50,000 Cycles (E)
L1=100,000 Cycles
L2=200,000 Cycles

G-Switch Specification:

Operating temperature range: -30°C to +85°C
Rating: 50mA, 12V DC
Insulation resistance: 100MΩ min. 100V DC
Dielectric strength: 250V AC for 1 min
Contact resistance: 100mΩ max.
Travel: 0.12±0.05mm



P.C.B LAND DIMENSION



CIRCUIT DIAGRAM

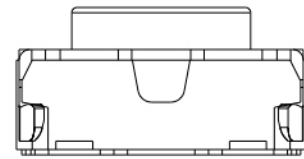
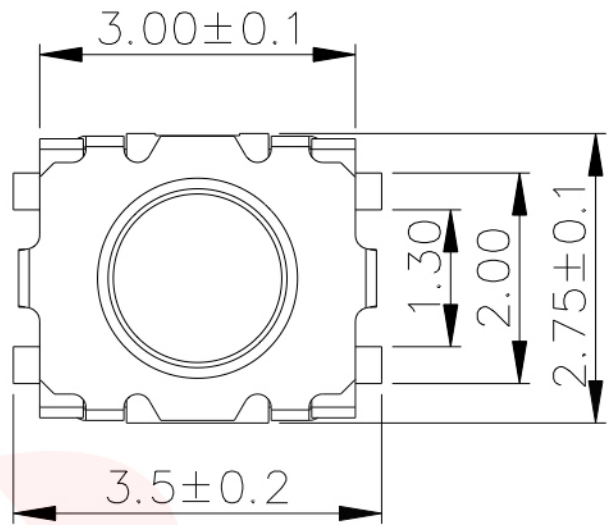


G-Switch Electronic (HongKong) CO.,Ltd.

Unless otherwise specified, Tolerance:
X. ±0.30
X.x ±0.20
X.xx ±0.15
X.xxx ±0.10
Angles ±3°

DESIGN	陈锋枫	DATE	2019.05.29
CHECKED		DATE	
APPROVED		DATE	
http://www.dg-switch.com			
TEL: 0769-82388879			

Molde code:		
GT-TC171X-H014-LX		
REV.: X1	SCALE: 4:1	UNIT: mm
SIZE: A4	SHEET: 1/1	

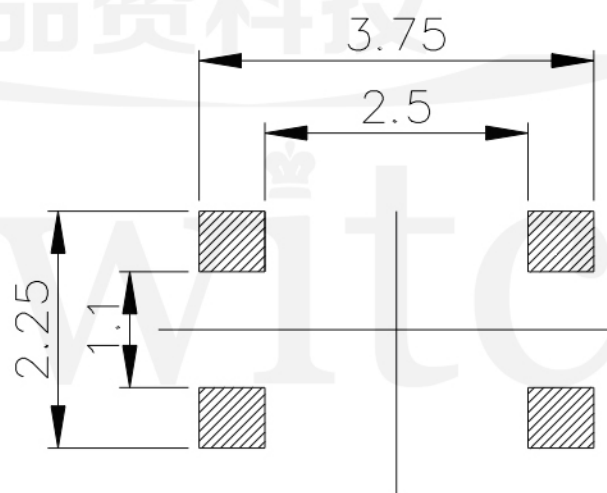
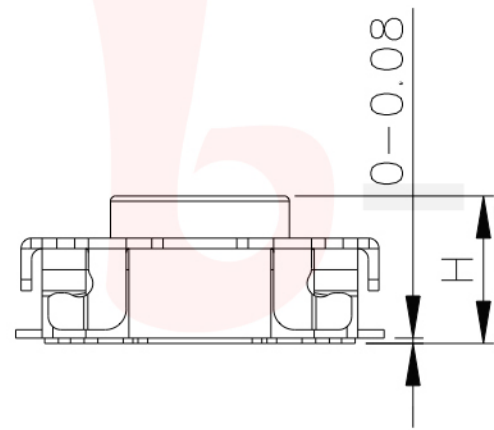


GT-TS171X-H014-LX

G-SWITCH Operating Force
 A=160gf
 B=250gf
 E=400gf

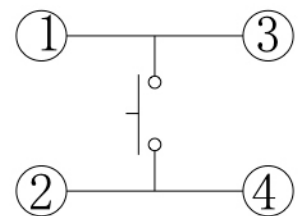
Switch Height (mm)
 H014=1.4mm

Switch lifetime (Force)
 L05=50,000 Cycles (E)
 L1=100,000 Cycles
 L2=200,000 Cycles



P.C.B LAND DIMENSION

G-Switch Specification:
 Operating temperature range: -30°C to +85°C
 Rating: 50mA, 12V DC
 Insulation resistance: 100MΩ min. 100V DC
 Dielectric strength: 250V AC for 1 min
 Contact resistance: 100mΩ max.
 Travel: 0.12 ± 0.05mm



CIRCUIT DIAGRAM



	G-Switch Electronic (HongKong) CO.,Ltd.				
	DESIGN 陈锋枫	DATE 2019.05.29	Molde code: GT-TS171X-H014-LX		
	CHECKED	DATE			
	APPROVED	DATE	REV.: X1	SCALE: 4:1	UNIT: mm
Unless otherwise specified, Tolerance: X. ±0.30 X.x ±0.20 X.xx ±0.15 X.xxx ±0.10 Angles ±3°		http://www.dg-switch.com TEL: 0769-82388879			SIZE: A4 SHEET: 1/1