

GT-TC057X-HXXX-LX

G-SWITCH

Operating Force

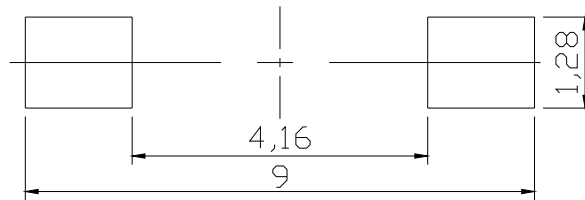
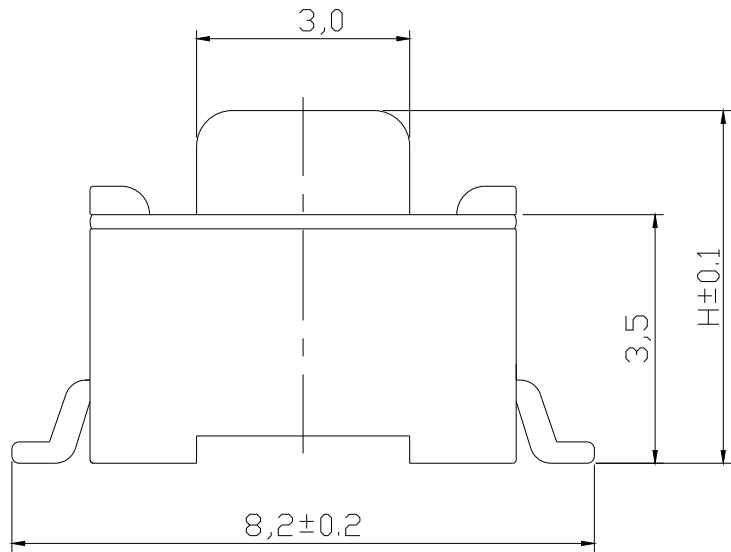
A=160gf
B=250gf
C=100gf

Switch Height (mm)

H043=4.3mm
H050=5.0mm

Switch lifetime (Force)

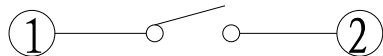
L1=100,000 Cycles



PCB. 焊接尺寸图

G-Switch Specification:

Operating temperature range: -30°C to +85°C
 Rating: 50mA. 12V DC
 Insulation resistance: 100MΩ min. 100V DC
 Dielectric strength: 250V AC for 1 min
 Contact resistance: 100m Ω max.
 Travel: 0.25±0.1mm



电路图



Unless otherwise specified, Tolerance:
 X. ±0.30
 X.x ±0.20
 X.xx ±0.15
 X.xxx ±0.10
 Angles ±3°

G-Switch Electronic (HongKong) CO.,Ltd.

DESIGN	陈锋枫	DATE	2019.05.29	Molde code:	
CHECKED		DATE		GT-TC057X-HXXX-LX	
APPROVED		DATE		REV.: X1	SCALE: 4:1
http://www.dg-switch.com			UNIT: mm	SIZE: A4	SHEET: 1/1
TEL: 0769-82388879					