

GT-TCA57X-HXXX-LX

G-SWITCH

Operating Force

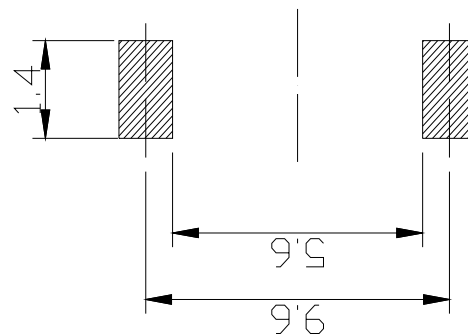
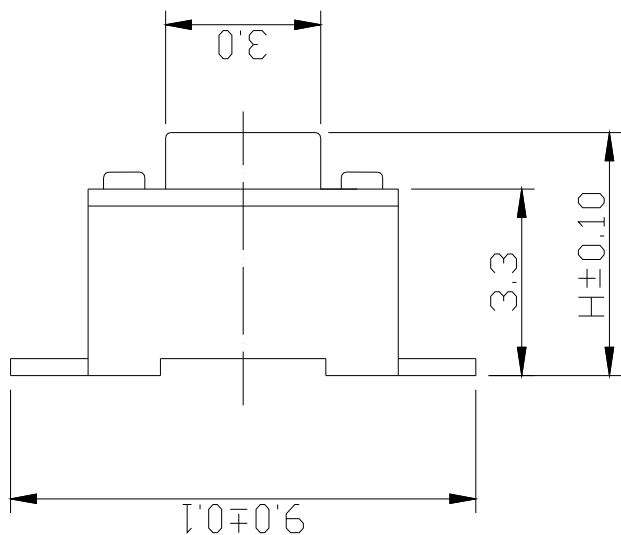
A=160gf
B=250gf
C=100gf

Switch Height (mm)

H043=4.3mm
H050=5.0mm

Switch lifetime (Force)

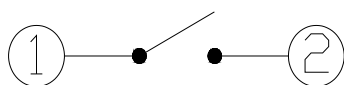
L1=100,000 Cycles



P.C.B LAND DIMENSION

G-Switch Specification:

Operating temperature range: -30°C to +85°C
Rating: 50mA.12V DC
Insulation resistance: 100MΩ min.100V DC
Dielectric strength: 250V AC for 1 min
Contact resistance: 100m Ω max.
Travel: 0.25±0.1mm



CIRCUIT DIAGRAM



G-Switch Electronic (HongKong) CO.,Ltd.

Unless otherwise specified, Tolerance:
X. ±0.30
X.x ±0.20
X.xx ±0.15
X.xxx ±0.10
Angles ±3°

DESIGN	陈锋枫	DATE	2019.05.29
CHECKED		DATE	
APPROVED		DATE	
http://www.dg-switch.com		REV.: X1	
TEL: 0769-82388879		SCALE:	4:1

Molde code:		
GT-TCA57X-HXXX-LX		
UNIT:	mm	
SIZE:	A4	
SHEET:	1/1	