

A

B

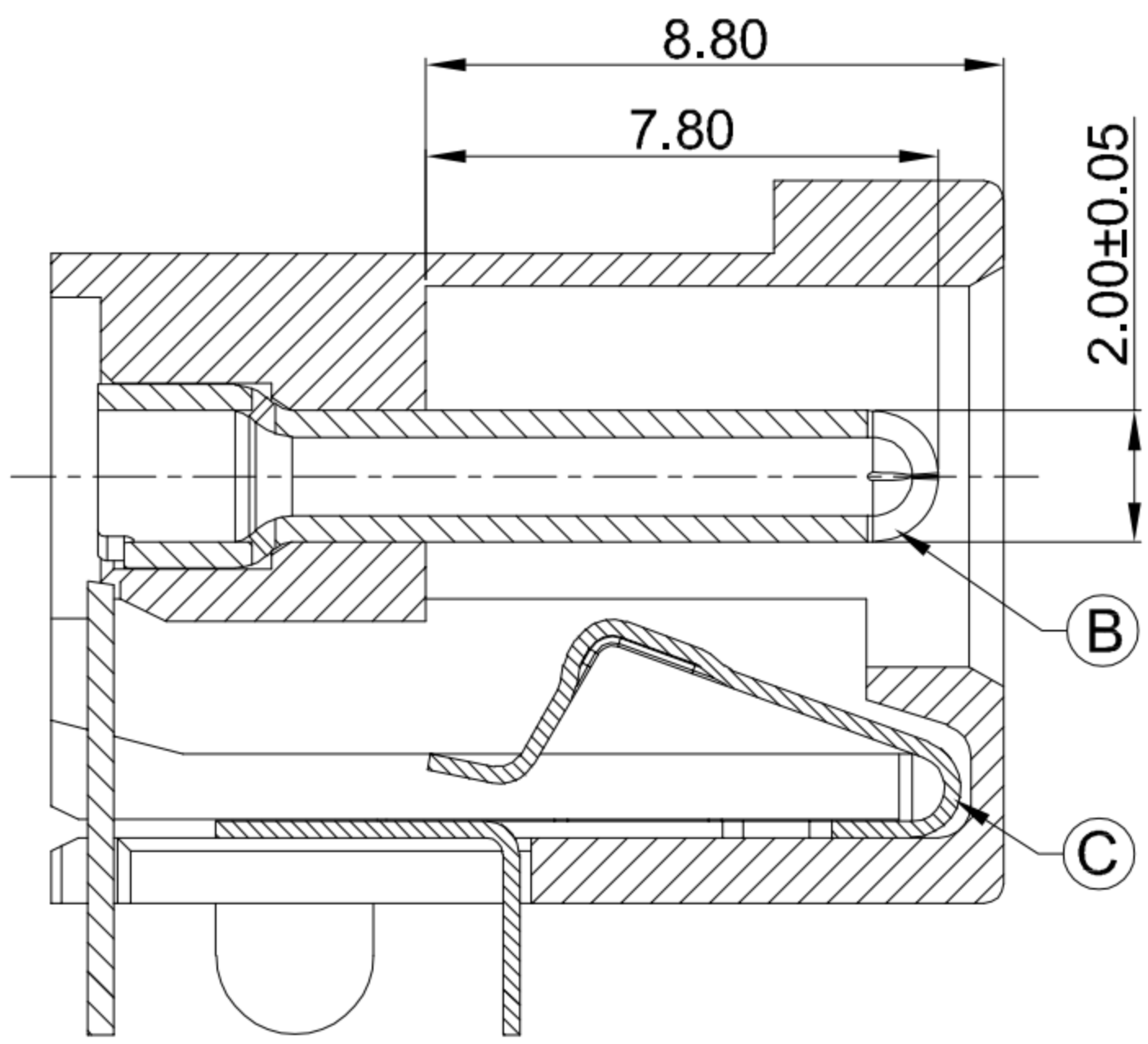
C

D

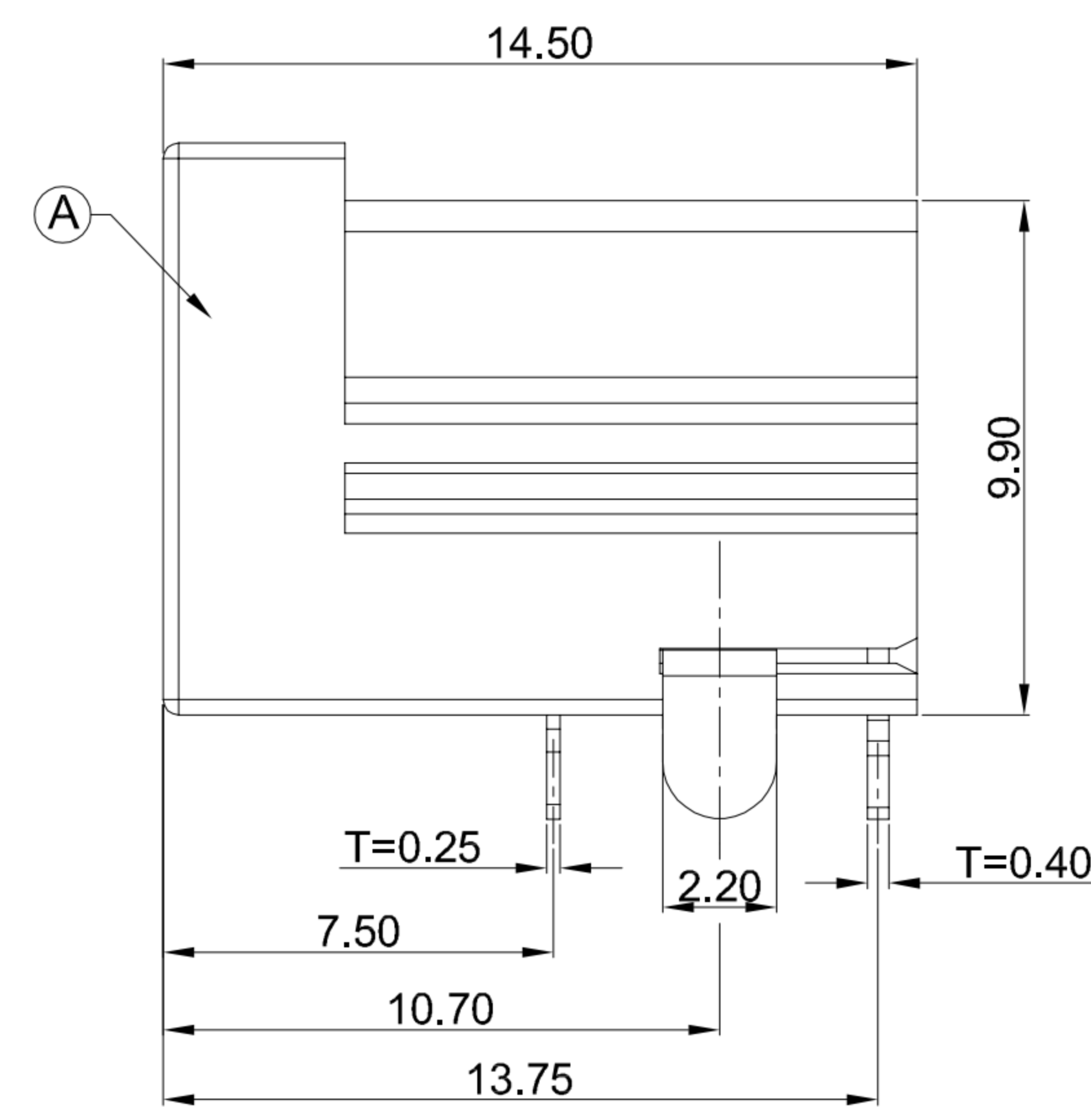
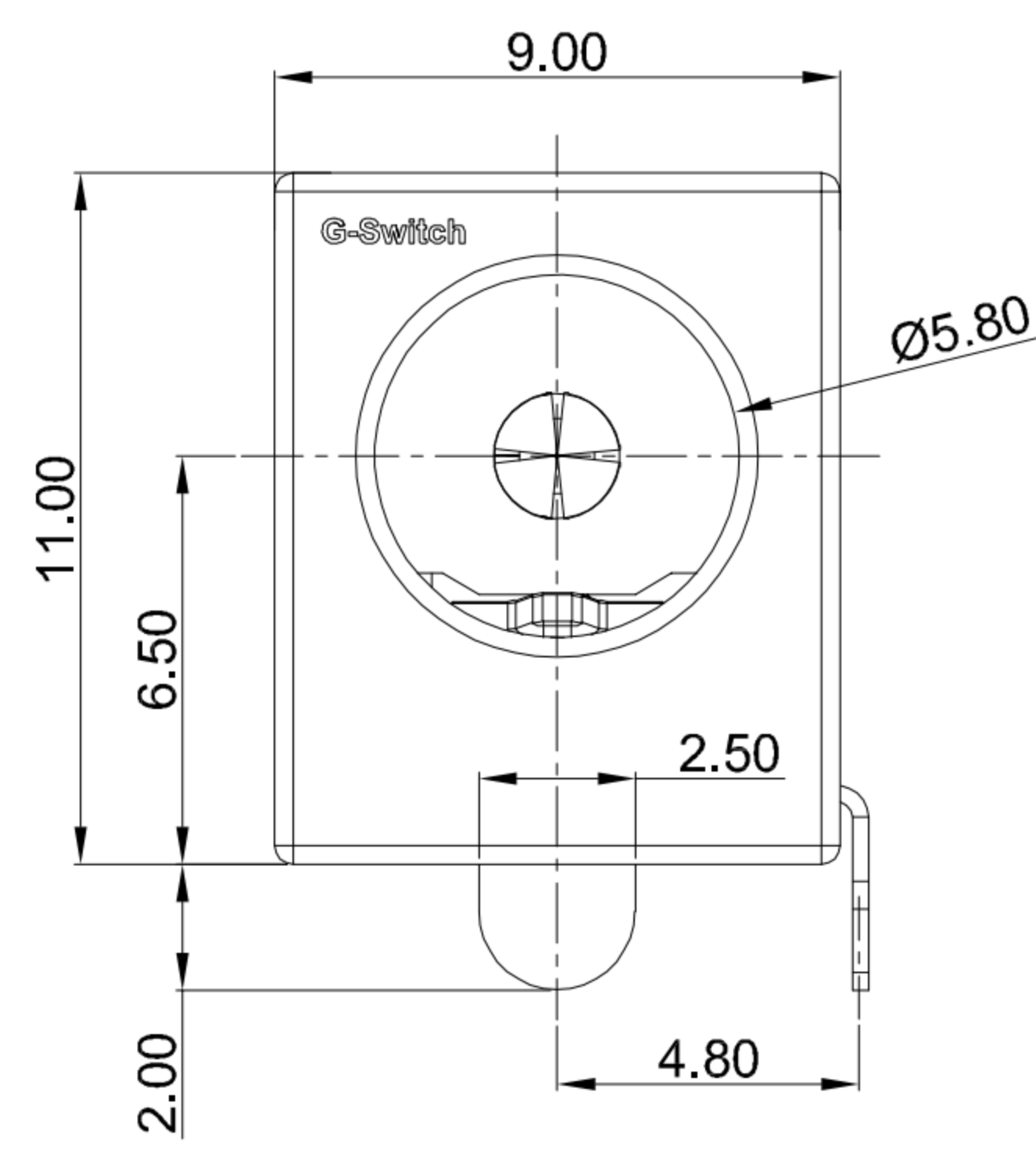
E

1

1

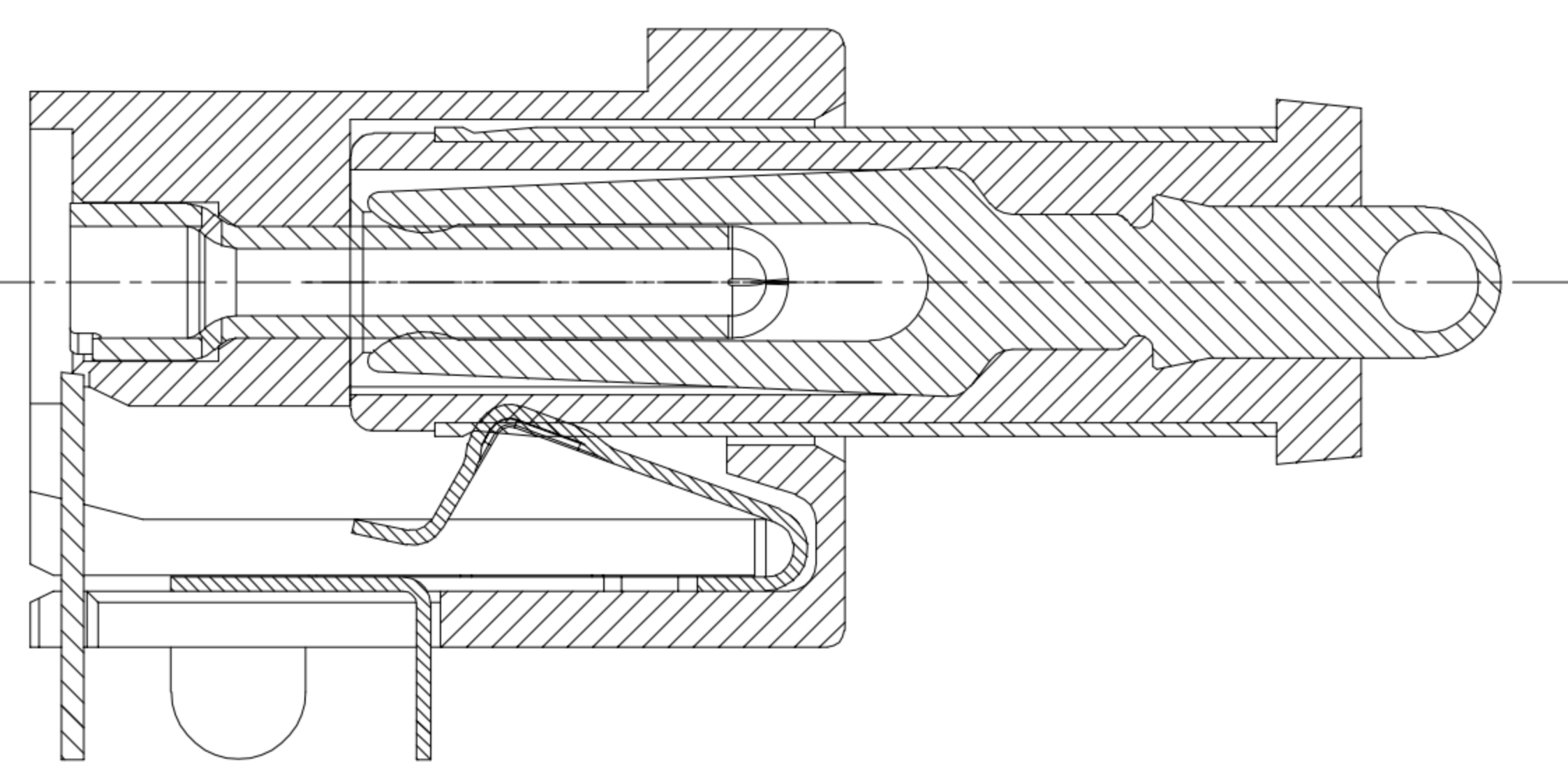


SECTION A-A

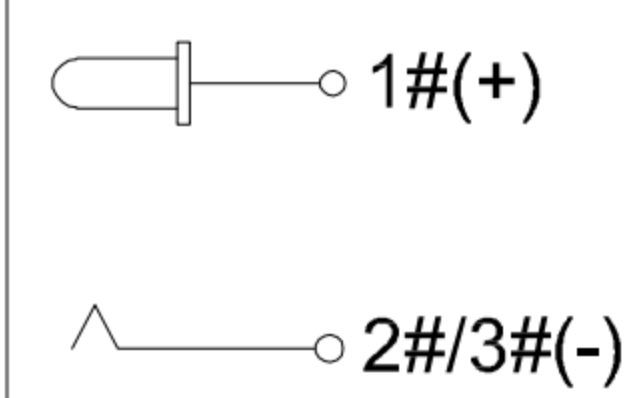


2

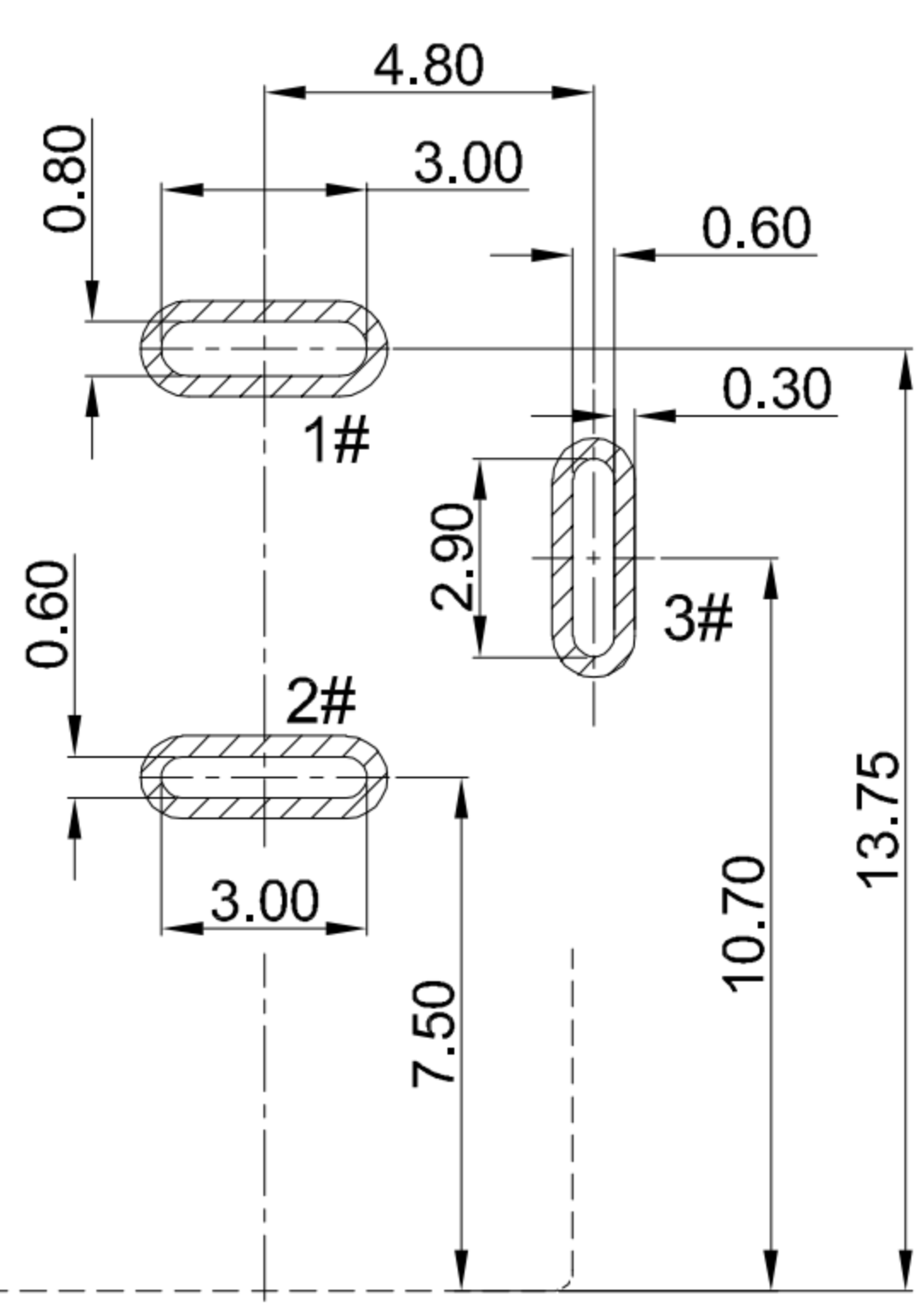
2



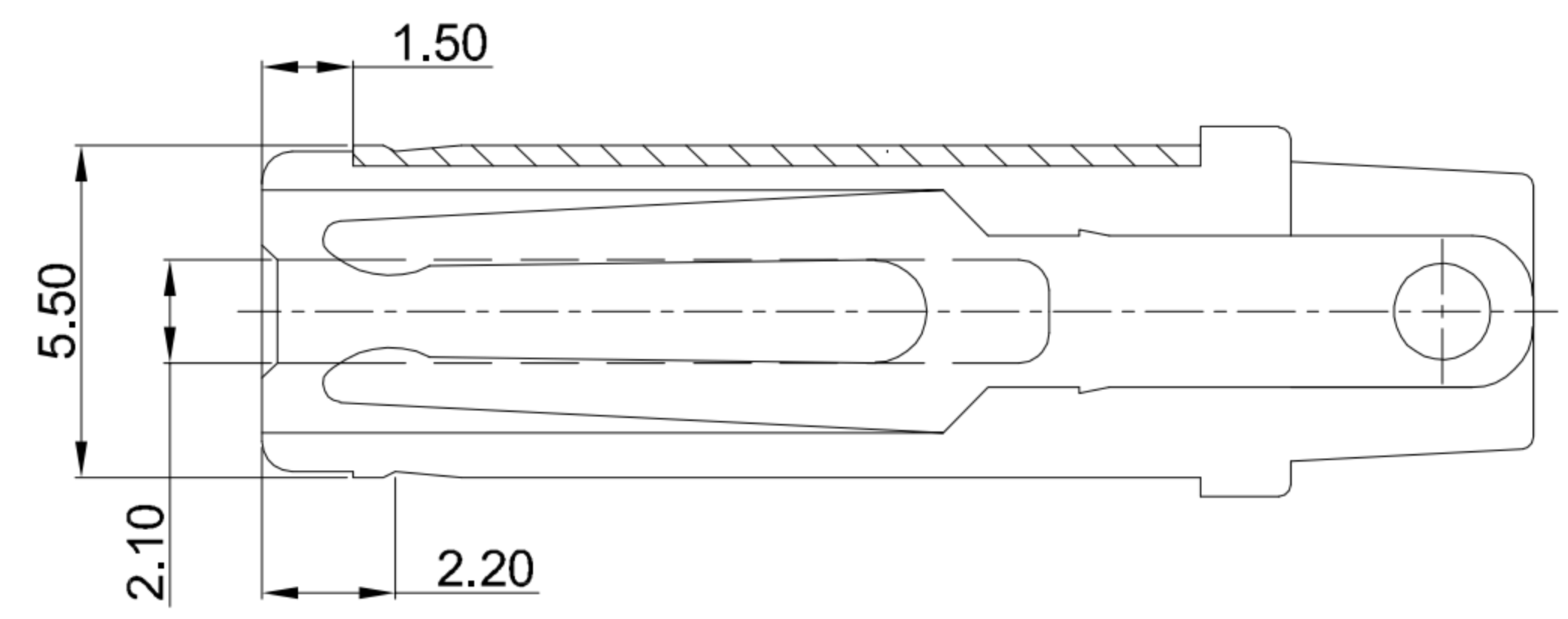
SCHEMATIC



CIRCUIT DIAGRAM



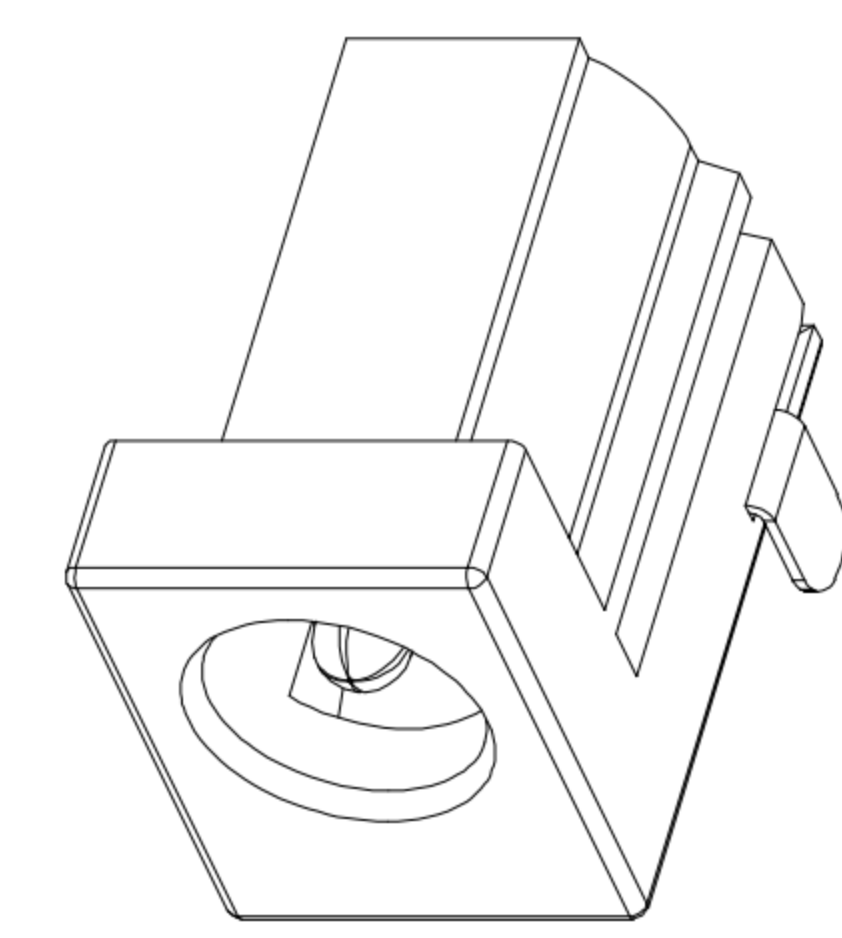
RECOMMENDED PCB LAYOUT TOLERANCE: ±0.05



MATING PLUG Ø5.5xØ2.1mm

3

3



4

4

G-Switch Specification:

- 1. Operating temperature range: -40°C ~ +85°C
- 2. Rated load: 7A.60V DC
- 3. Insulation resistance: 100MΩ min
- 4. Withstand voltage: 500V AC/min
- 5. Contact resistance: 30mΩ max
- 6. Durability cycle: 5,000 Cycles
- 7. Insertion and extraction force: 3-40N

5

5

A	HOUSING	HIGH TEMPERATURE PLASTIC	PA10T BLACK
B	CENTER PIN	BRASS	Sn/Ni
C	SPRING	COPPER ALLOY	Sn/Ni
NO.	PART NAME	MATERIAL	REMARK



SCALE: 1:1	UNIT: mm	Title: Horizontal DC Power Jack 5521 DIP CH=6.5 L=14.5 Ø2.0mm			
SIZE: A4		Molde Code: DC-S009A-D020-7A			
Unless otherwise General tolerance:		DRAWN	CHECKED	APPROVED	DATE
X	±0.50	Xia	Chen	Chen	2023.02.01
X.x	±0.30				
X.xx	±0.20				
X.xxx	±0.10				
X.x°	±3°				



REV: A0 SHEET: 1/1

A

B

C

D

E