

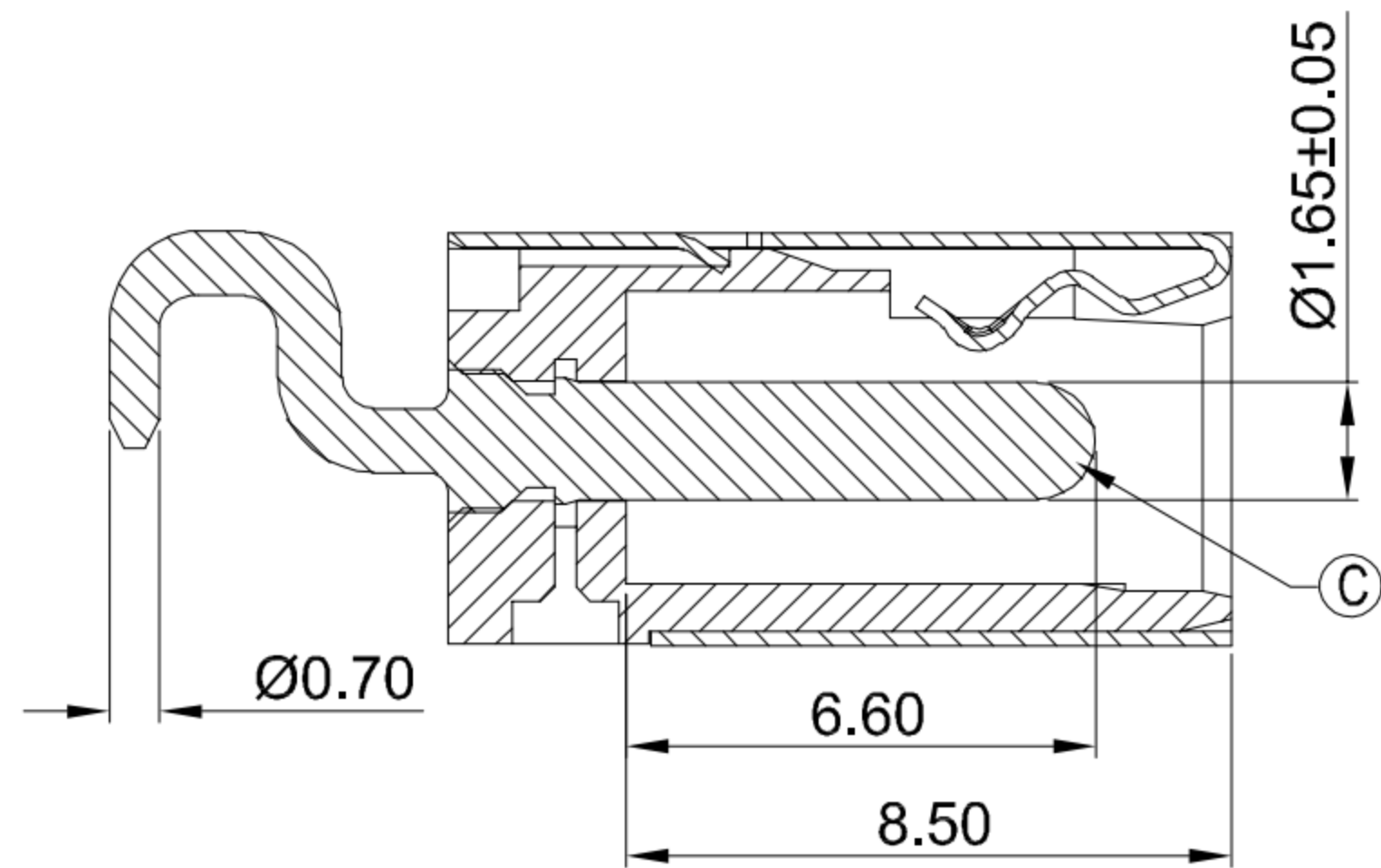
A

B

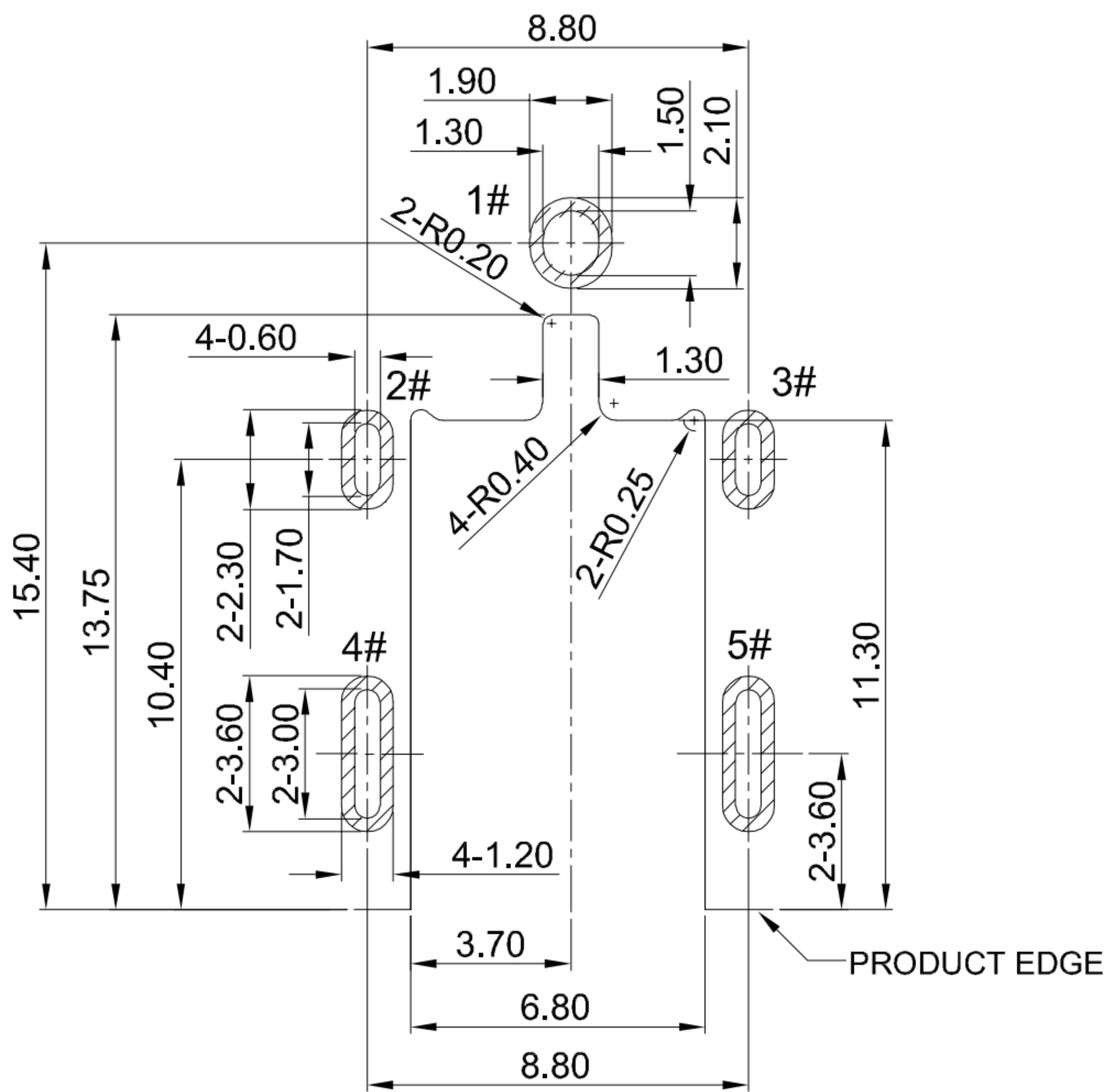
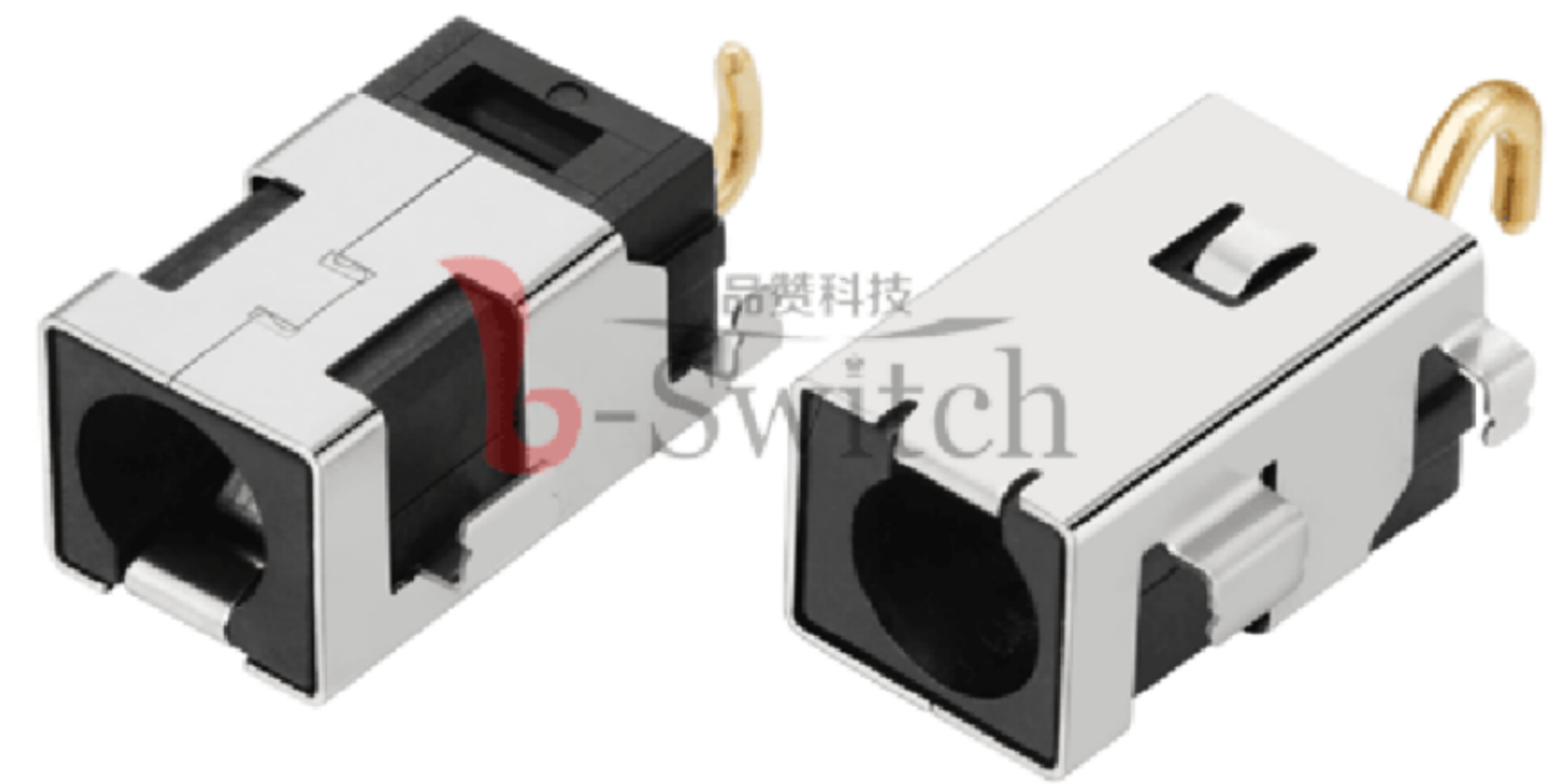
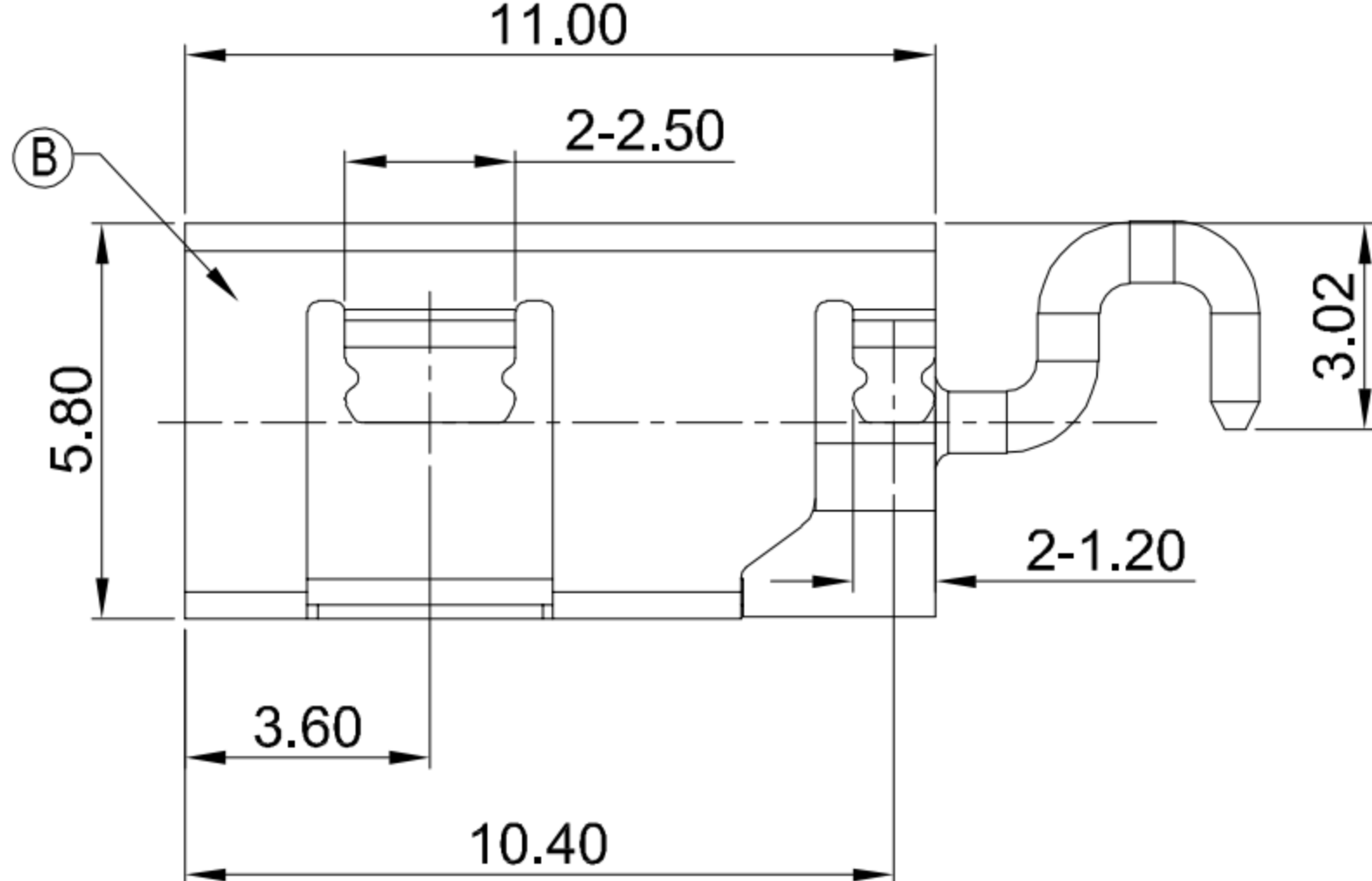
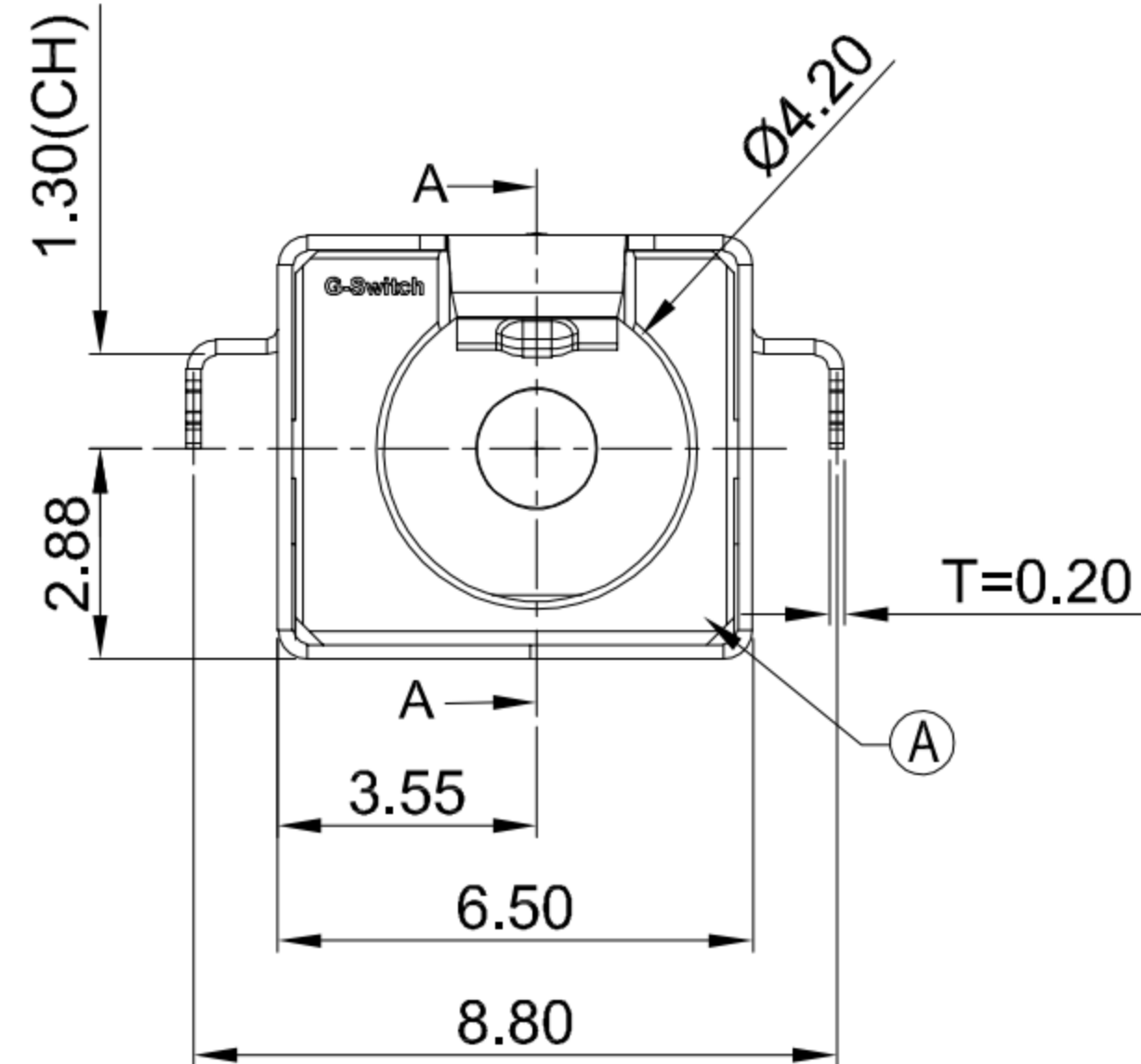
C

D

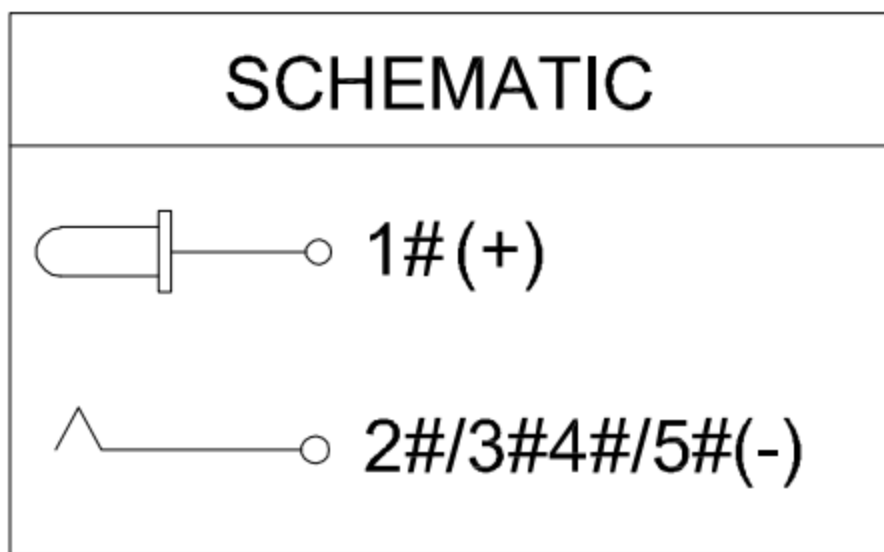
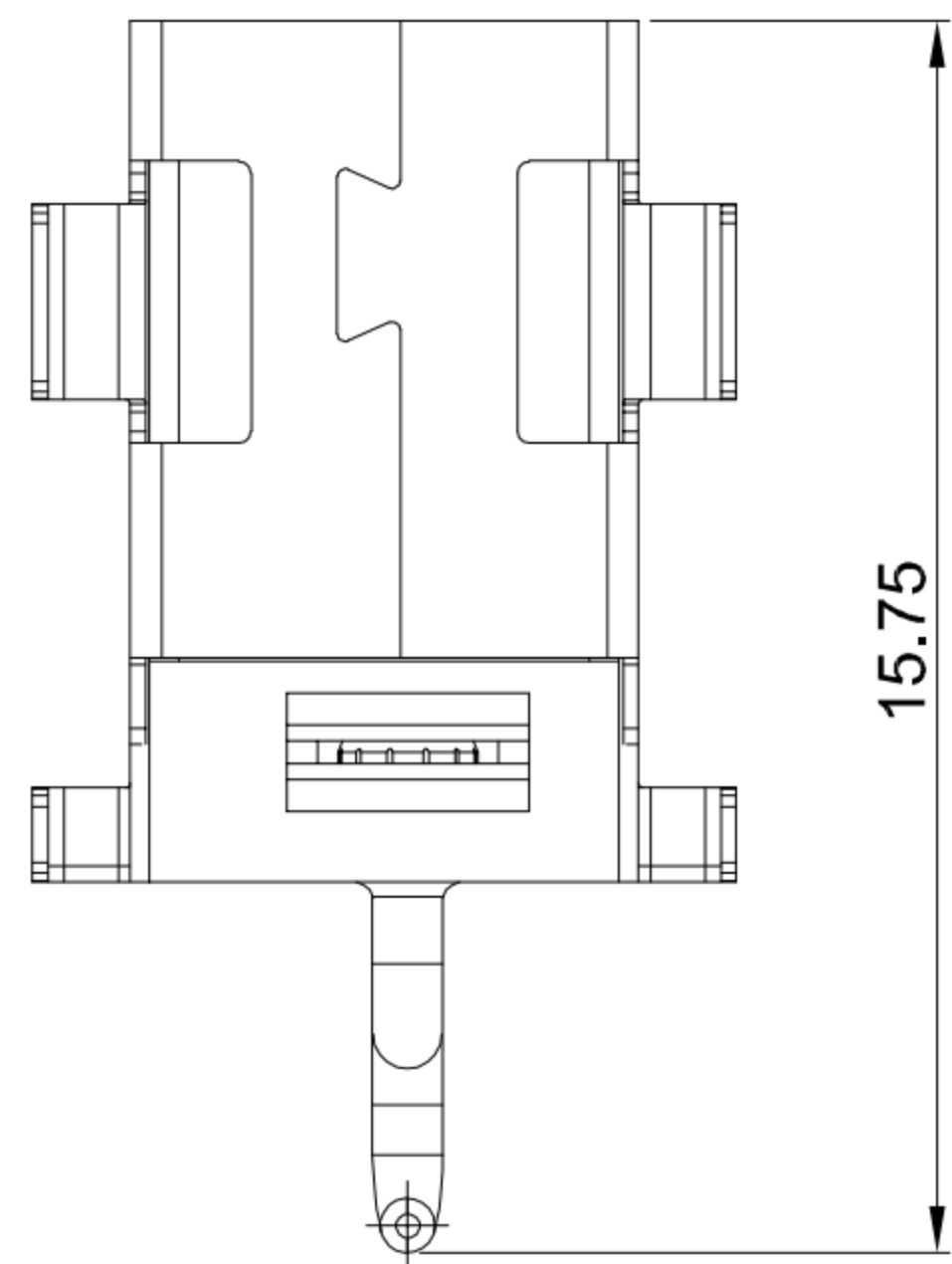
E



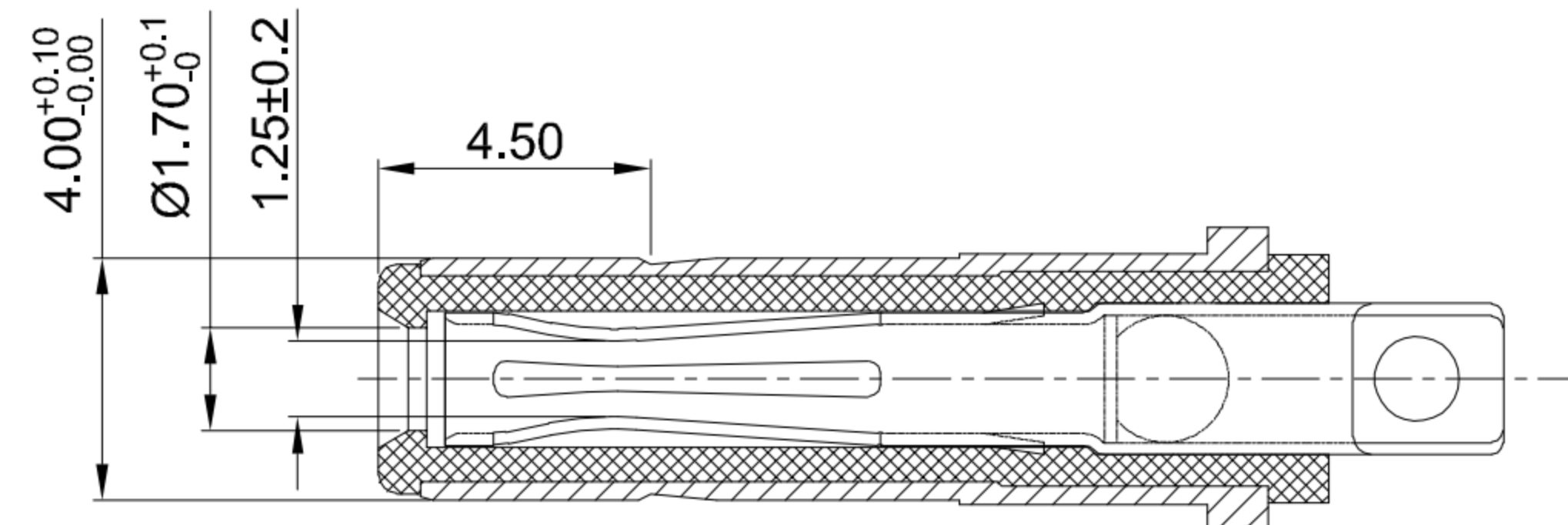
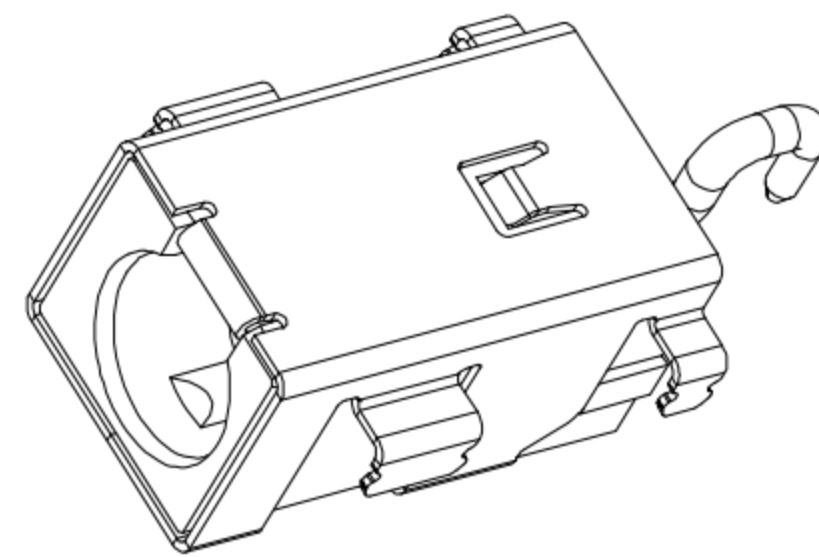
SECTION A-A



RECOMMENDED PCB LAYOUT  
TOLERANCE:±0.05



CIRCUIT DIAGRAM



MATING PLUG Ø4.0xØ1.7mm

**G-Switch Specification:**

1. Operating temperature range: -40°C ~ +85°C
2. Rated load : 5A.20V DC
3. Insulation resistance: 100MΩ min
4. Withstand voltage: 500V AC/min
5. Contact resistance: 30mΩ max
6. Durability cycle: 5000 Cycles
7. Insertion force: 3N-30N
8. Extraction force: 3N-30N

A	HOUSING	HIGH TEMPERATURE PLASTIC	BLACK
B	SHELL	COPPER ALLOY	Ni PLATING
C	CENTER PIN	BRASS	GOLD FLASH/Ni
NO.	PART NAME	MATERIAL	REMARK



SCALE: 1:1	UNIT: mm	Horizontal DC Power Jack 4017			
SIZE: A4		Title: DIP Sink 4.18 CH=1.3 L=11.0 Ø1.65mm			
Unless otherwise General tolerance: X ±0.50 X.x ±0.30 X.xx ±0.20 X.xxx ±0.10 X.° ±3°		Molde Code: DC-S003D-D0165-5A			
		DRAWN	CHECKED	APPROVED	DATE
		Xia	Chen	Chen	2023.02.01



REV: A0 SHEET: 1/1