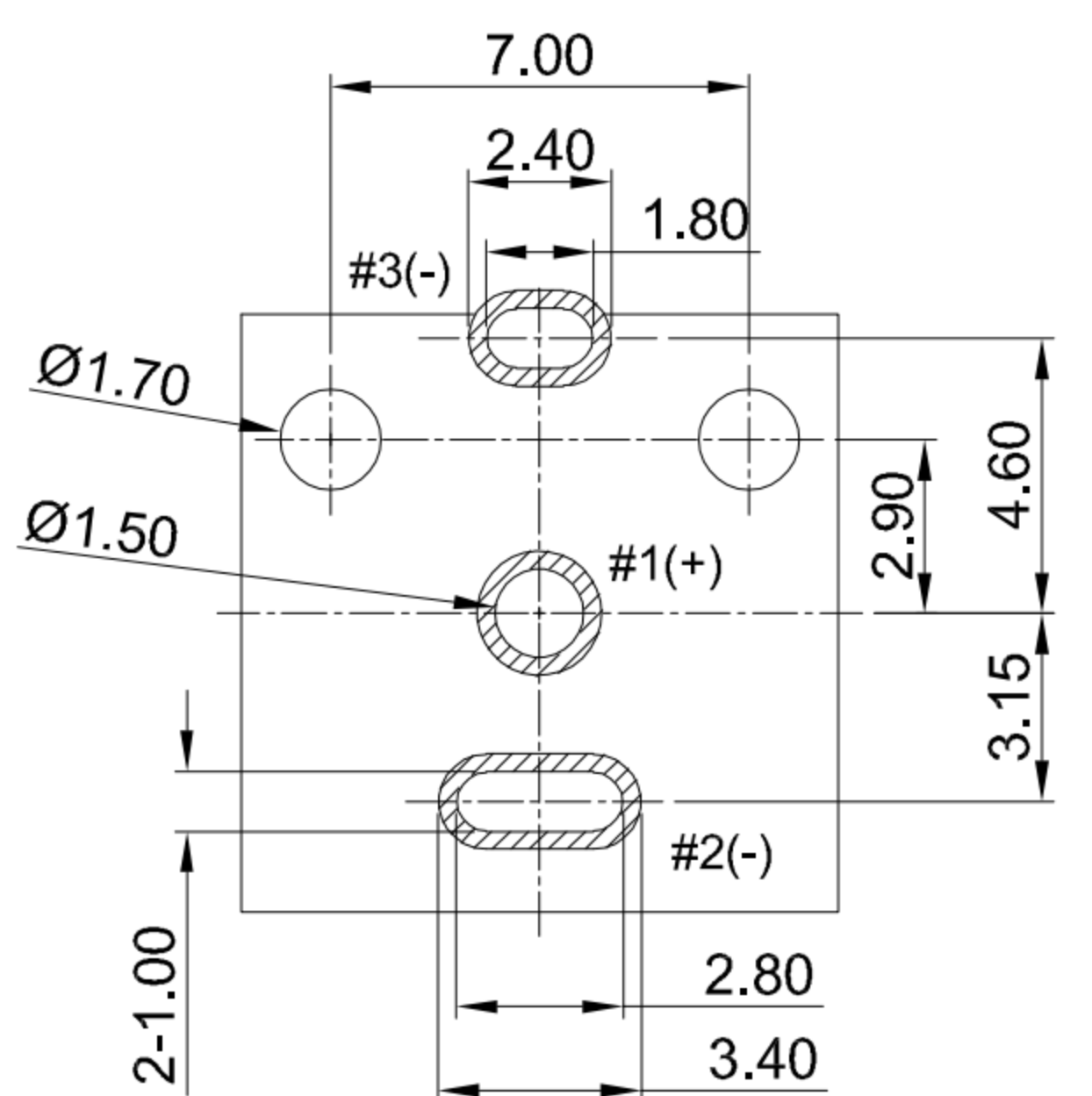
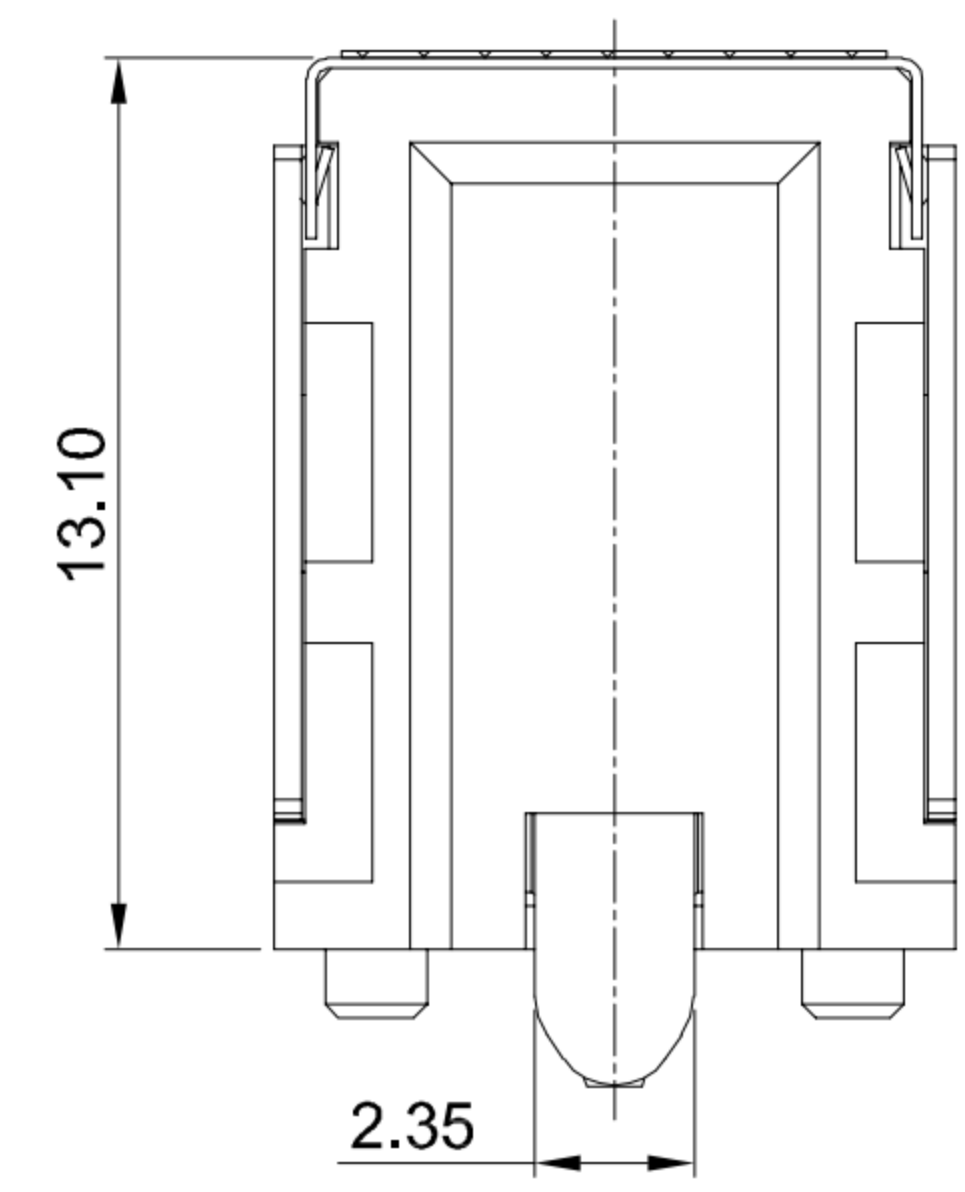
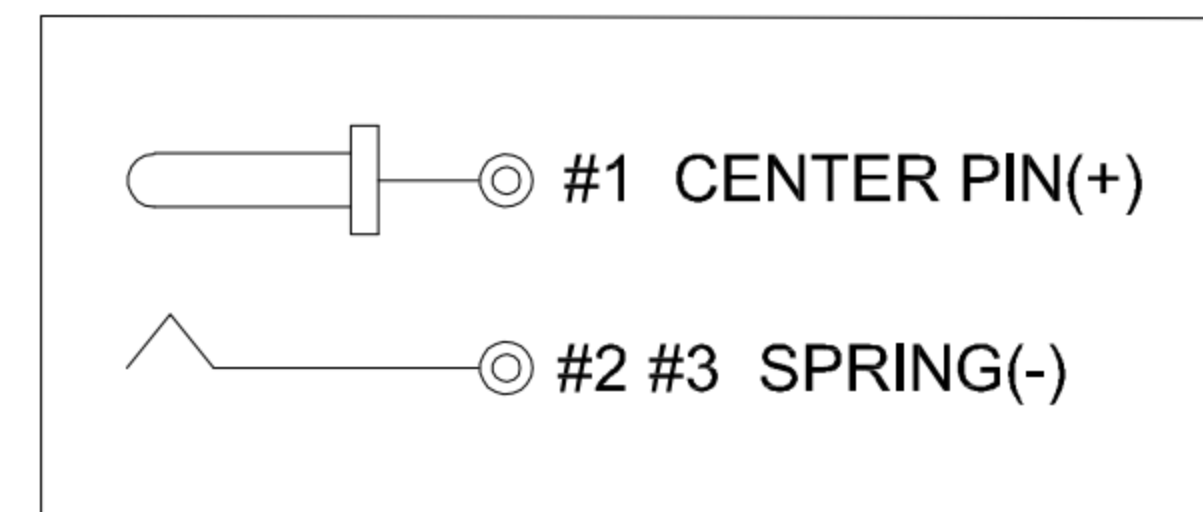


MATING PLUG Ø5.5xØ2.5mm



RECOMMENDED PCB LAYOUT  
TOLERANCE:±0.05



CIRCUIT DIAGRAM

- G-Switch Specification:**
1. Operating temperature range: -40°C ~ +85°C
  2. Rated load: 10A.20V DC
  3. Insulation resistance: 100MΩ min
  4. Withstand voltage: 500V AC/min
  5. Contact resistance: 30mΩ max(INITIAL)
  6. Durability cycle: 5000 Cycles
  7. Insertion and extraction force: 3-30N

NO.	PART NAME	MATERIAL	REMARK
G	MYLAR	W8.0*L10.0*T0.1mm	YELLOW
F	COVER	SUS301 3/4H t=0.15	CLEAN
E	STOPPER	SUS430 t=0.30	CLEAN
D	TERMINAL SPRING	C5210-EH t=0.30	Ag 20u"/Ni 50u"
C	CENTER PIN	H65	Ag 20u"/Ni 50u"
B	SHELL	SUS304 1/2H t=0.40	Ni 50u"
A	HOUSING	PA9T HALOGEN FREE FLAME RETARDANT	BLACK



SCALE: 1:1	UNIT: mm	Title: Vertical DC Power Jack 5525 DIP H=13.1 Ø2.5mm			
SIZE: A4		Molde Code: DC-S024A-D025-10A			
Unless otherwise General tolerance:		DRAWN	CHECKED	APPROVED	DATE
X	±0.50	Xia	Chen	Chen	2023.02.01
X.x	±0.30				
X.xx	±0.20				
X.xxx	±0.10				
X.x°	±3°				



REV: A0 SHEET: 1/1