

G-Switch Specification:

1. Current rated: 0.5A AC/DC
2. Voltage rating: 50V AC/DC
3. Withstanding voltage: 500V AC
4. Contact resistance: 40mΩ max.
5. Insulation resistance: 500MΩ min
6. Durability cycle: 20Cycles
7. Removal force: 0.03kgf/Pin min
8. Operating temperature range: -25°C ~ +85°C



GT-F1002 S V 55 -XX X XX 01

G-Switch

Series No

Termipoint
S-SMT

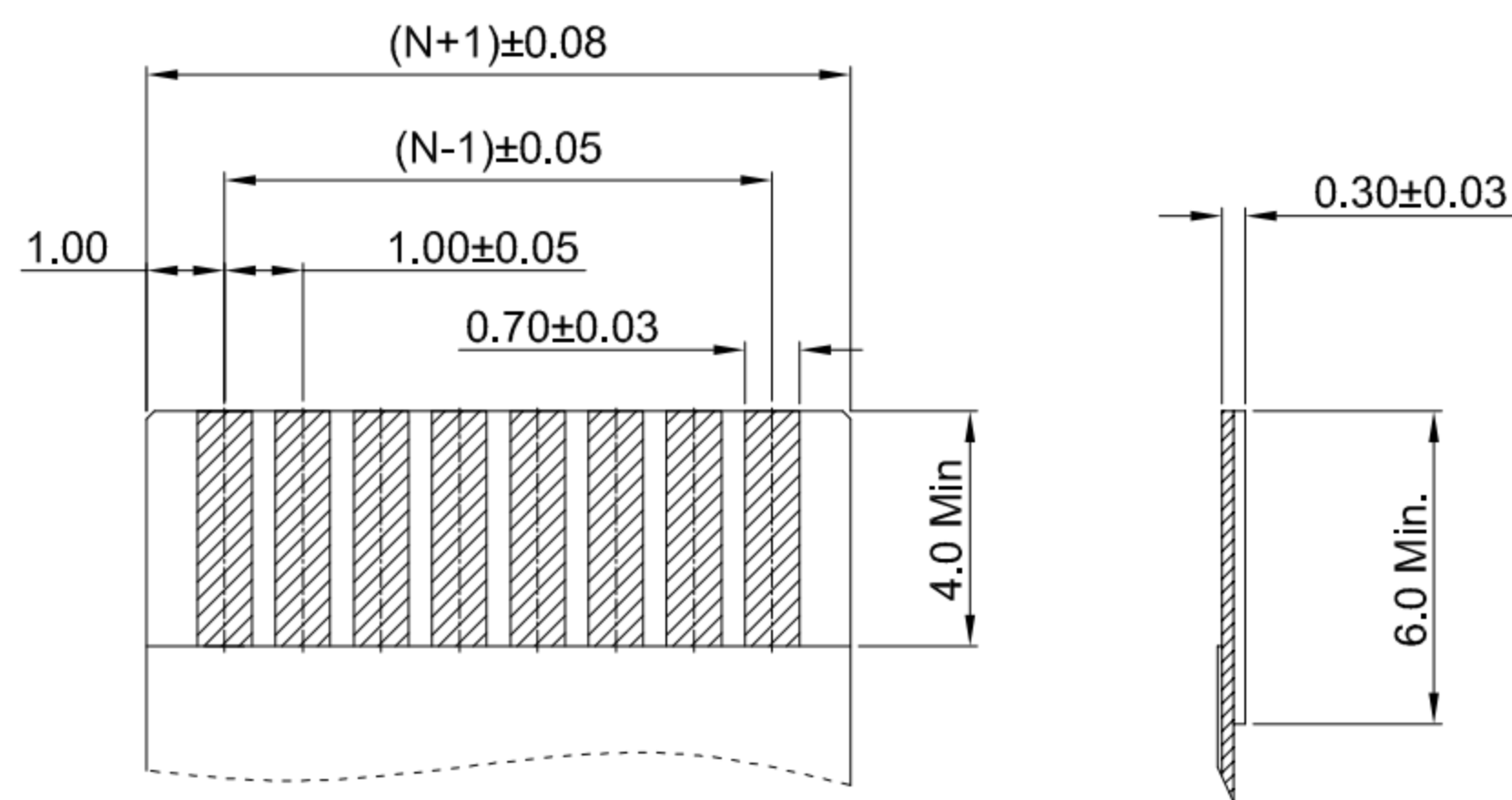
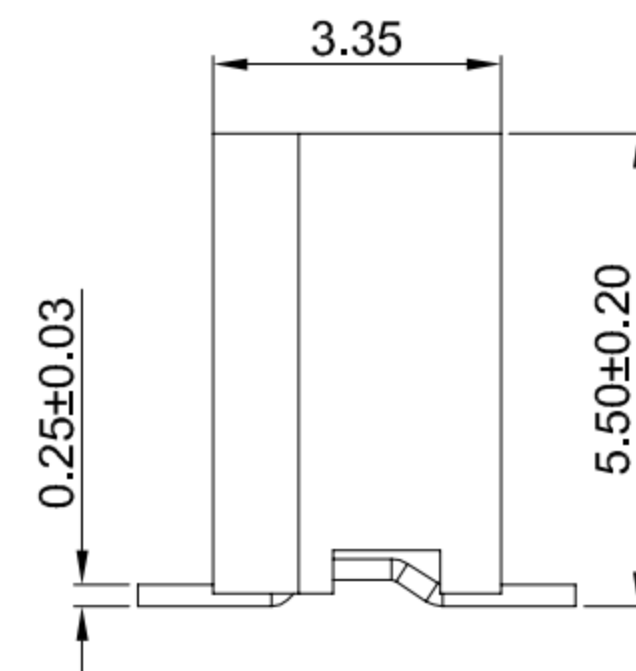
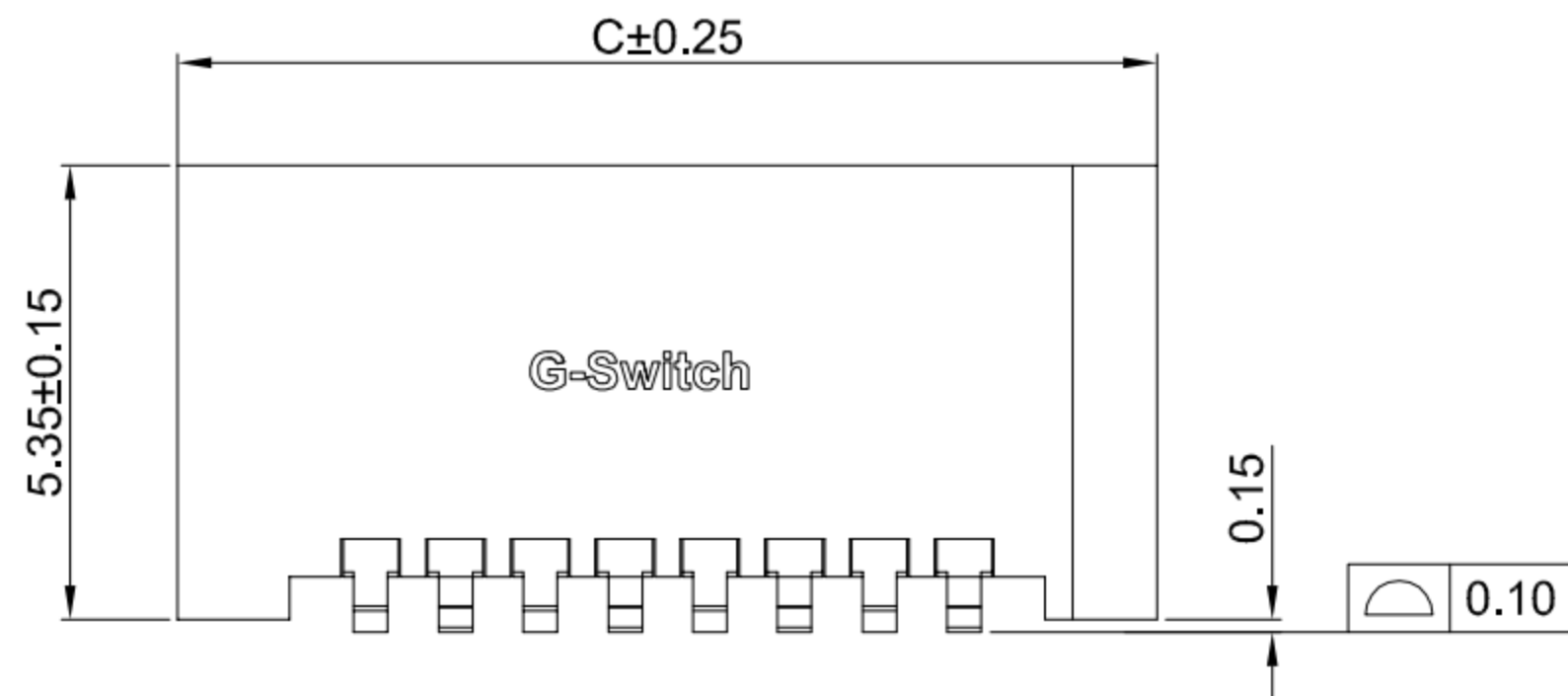
Angle
V-180°

Terminal Plating
11-All G/F
BT-Bright tin

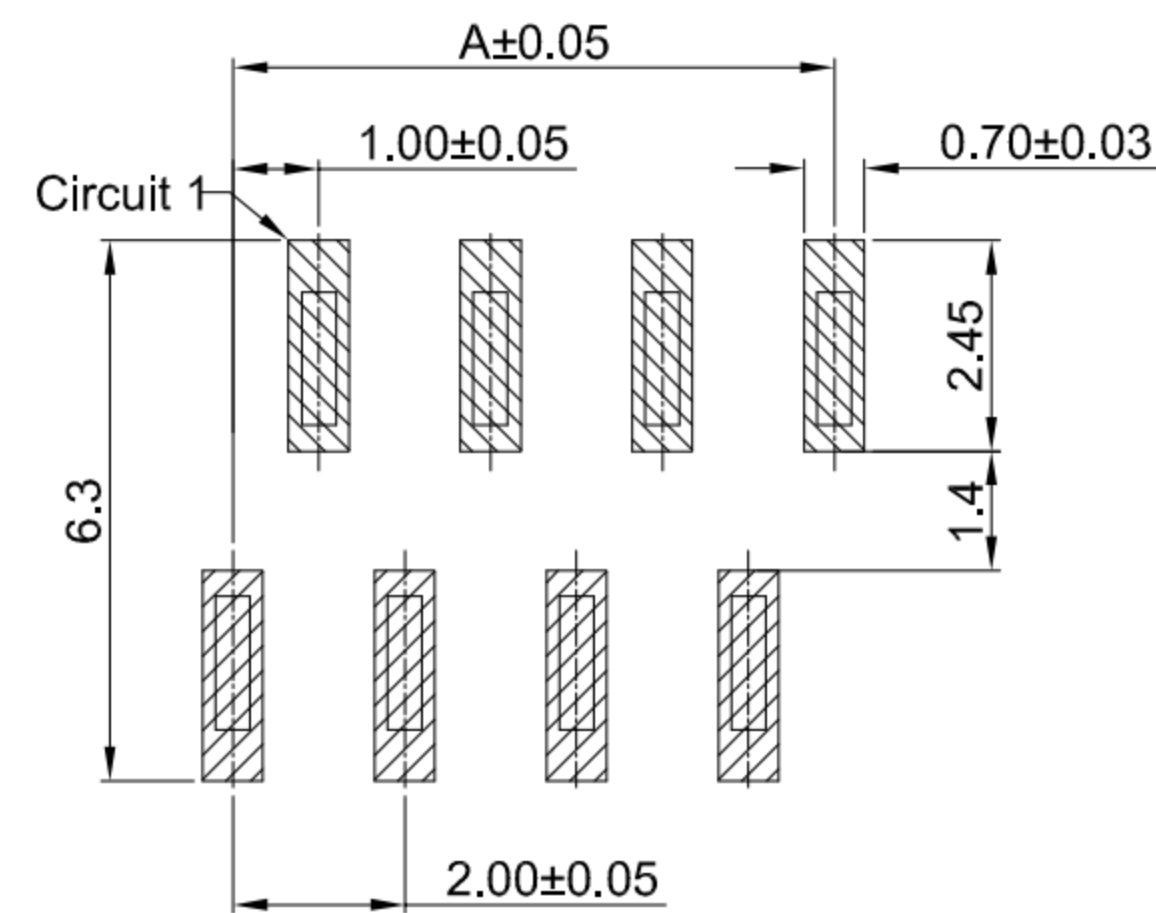
Housing Colour
S-Nature

Pin Q' PY
04~40

Height
55-5.50mm



APPLICABLE FPC



RECOMMENDED PCB LAYOUT
TOLERANCE: ±0.05

Ordering Information:

Circuit	Dimensions(mm)			Circuit	Dimensions(mm)		
	A	B	C		A	B	C
04	3.00	5.07	7.55	23	22.00	24.07	26.55
05	4.00	6.07	8.55	24	23.00	25.07	27.55
06	5.00	7.07	9.55	25	24.00	26.07	28.55
07	6.00	8.07	10.55	26	25.00	27.07	29.55
08	7.00	9.07	11.55	27	26.00	28.07	30.55
09	8.00	10.07	12.55	28	27.00	29.07	31.55
10	9.00	11.07	13.55	29	28.00	30.07	32.55
11	10.00	12.07	14.55	30	29.00	31.07	33.55
12	11.00	13.07	15.55	31	30.00	32.07	34.55
13	12.00	14.07	16.55	32	31.00	33.07	35.55
14	13.00	15.07	17.55	33	32.00	34.07	36.55
15	14.00	16.07	18.55	34	33.00	35.07	37.55
16	15.00	17.07	19.55	35	34.00	36.07	38.55
17	16.00	18.07	20.55	36	35.00	37.07	39.55
18	17.00	19.07	21.55	37	36.00	38.07	40.55
19	18.00	20.07	22.55	38	37.00	39.07	41.55
20	19.00	21.07	23.55	39	38.00	40.07	42.55
21	20.00	22.07	24.55	40	39.00	41.07	43.55
22	21.00	23.07	25.55	--	--	--	--

2	CONTACT	BRASS	BRIGHT Tin Or ALL G/F
1	HOUSING	LCP,94V-0	NATURE
NO.	PART NAME	MATERIAL	REMARK



SCALE: 1:1 UNIT: mm
SIZE: A4

Unless otherwise
General Tolerance:
X ±0.40
X.x ±0.30
X.xx ±0.20
X* ±5°
X.x° ±3°

Title: FPC1.00 Pitch 180° H5.50mm SMT Type
Dual Row Connector

Molde Code: GT-F1002SV55-XXXXX01

DRAWN	CHECKED	APPROVED	DATE
Jiang	Hu	Chen	2021.06.28



REV: A0 SHEET: 1/1