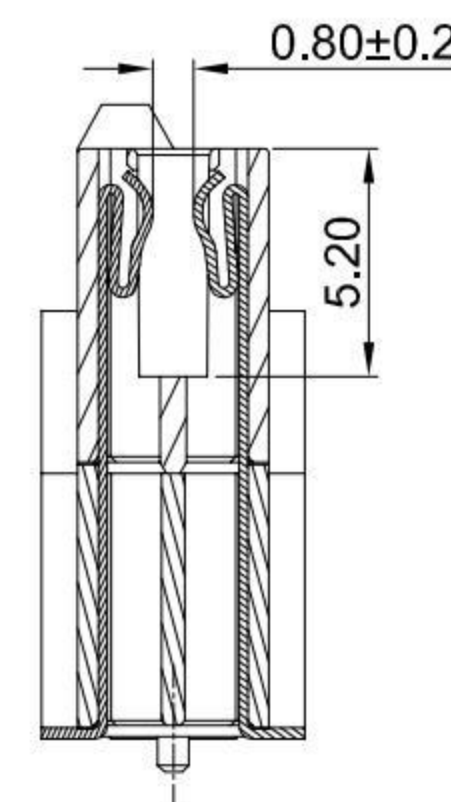
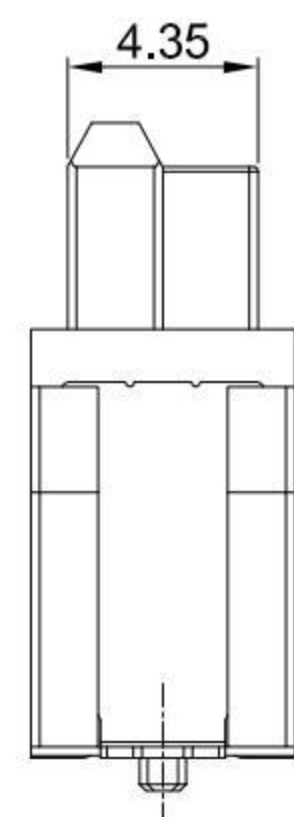
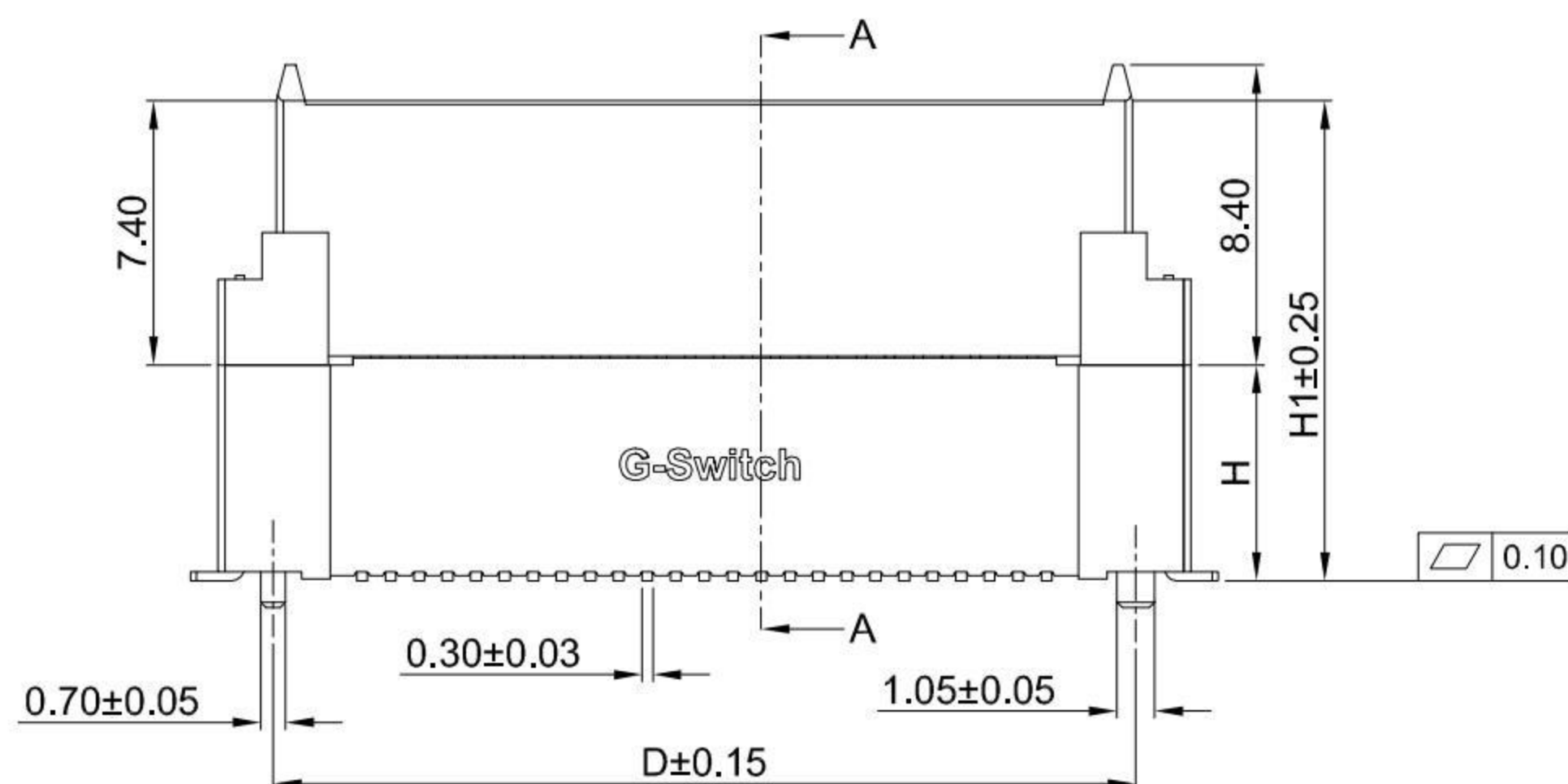
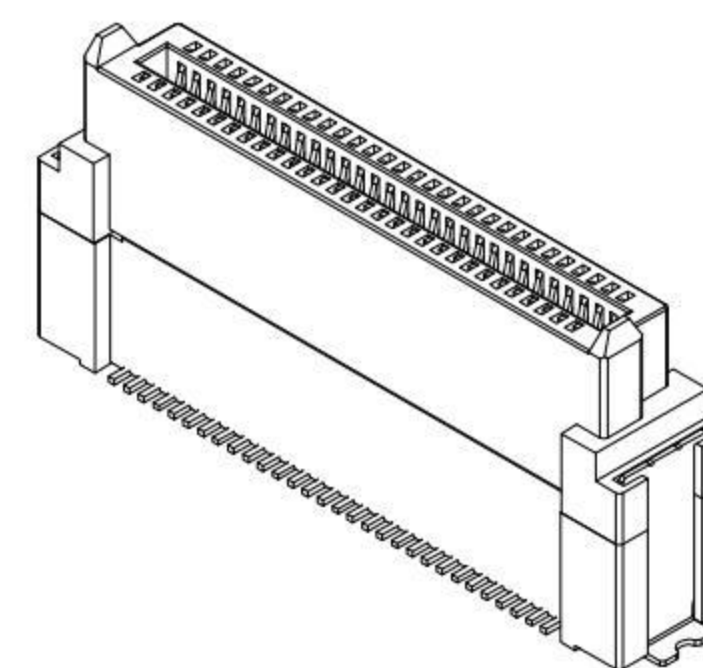


RECOMMEND PCB LAYOUT
TOLERANCE:±0.05



SECTION A-A



GT-B0808 F S V XX -XX X XX 01

G-Switch	Terminal Plating
Series No	01-Au G/F
F-Female	Housing Colour
Termipoint	B-Black
S-SMT	Pin Q' PY
Angle	20~160
V-180°	Height (H1)
	80- 7.4mm
	11-10.4mm
	12-11.4mm
	13-12.4mm
	14-13.4mm

G-Switch Specification:

- 1.Current rated: 0.5A AC/DC
- 2.Voltage rating: 100V AC/DC
- 3.Withstanding voltage: 200V AC for 1 min
- 4.Contact resistance: 30mΩ max.
- 5.Insulation resistance: 500MΩ min
- 6.Durability cycle: 50 Cycles
- 7.Removal force: 0.015kgf/Pin min
- 8.Operating temperature range: -40°C ~ +85°C

Ordering Information:

Circuit	Dimension(mm)					Mated Height						H1	H
	A	B	C	D	E	PLUG	Soclet H1						
							13.40	12.40	11.40	10.40	7.40		
20	15.30	8.60	7.20	12.2	12.80								
30	19.30	12.60	12.20	16.20	16.80	8.00	16.00	15.00	14.00	13.00	10.00	7.40	---
40	23.30	16.60	15.20	20.20	20.80	11.00	19.00	18.00	17.00	16.00	13.00	10.40	3.00
50	27.30	20.60	19.20	24.20	24.80	12.00	20.00	19.00	18.00	17.00	14.00	11.40	4.00
60	31.30	24.60	23.20	28.20	28.80	13.00	21.00	20.00	19.00	18.00	15.00	12.40	5.00
80	39.30	32.60	31.20	36.20	36.80	14.00	22.00	21.00	20.00	19.00	16.00	13.40	6.00
100	47.30	40.60	39.20	44.20	44.80	---	---	---	---	---	---	---	---
120	55.30	48.60	47.20	52.20	52.80	---	---	---	---	---	---	---	---
160	71.30	64.60	63.20	68.20	68.80	---	---	---	---	---	---	---	---



SCALE: 1:1 UNIT: mm
SIZE: A4

Unless otherwise
General Tolerance:
X ±0.40
X.x ±0.30
X.xx ±0.20
X° ±5°
X.X° ±3°

Title: BTB 0.80mm Pitch 180° Dual Rows
SMT Type Female Connector

Molde Code: GT-B0808FSVXX-XXXXX01

DRAWN	CHECKED	APPROVED	DATE
Xia	Chen	Chen	2022.12.28



REV: A0 SHEET: 1/1