

A B C D E

1

2

3

4

5

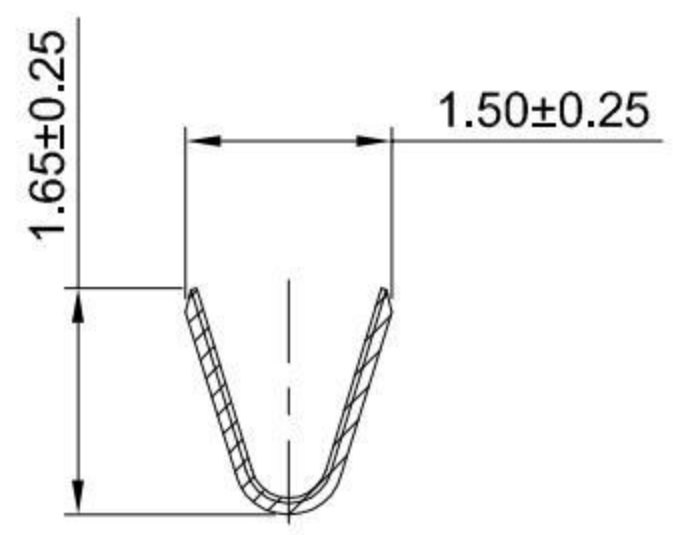
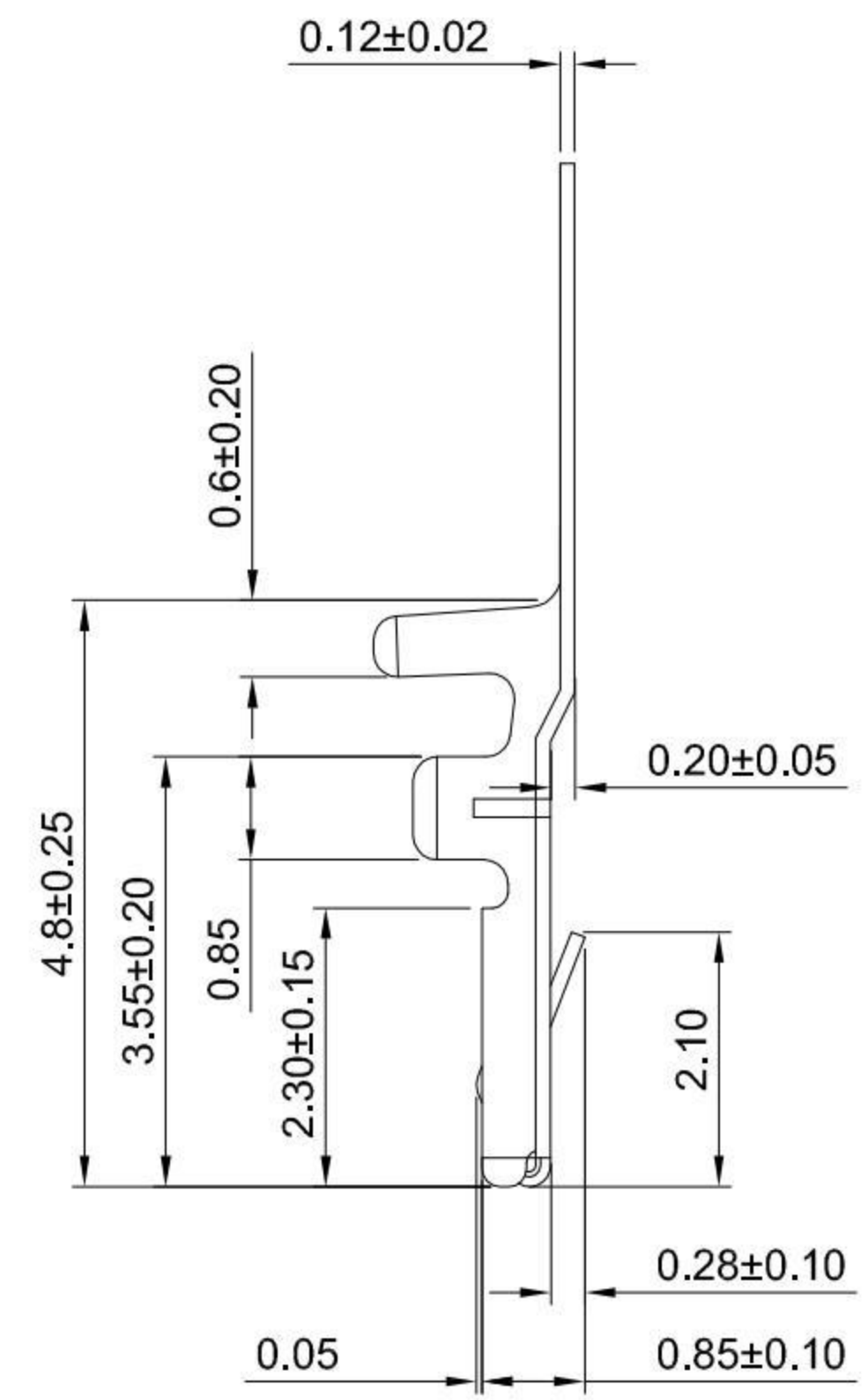
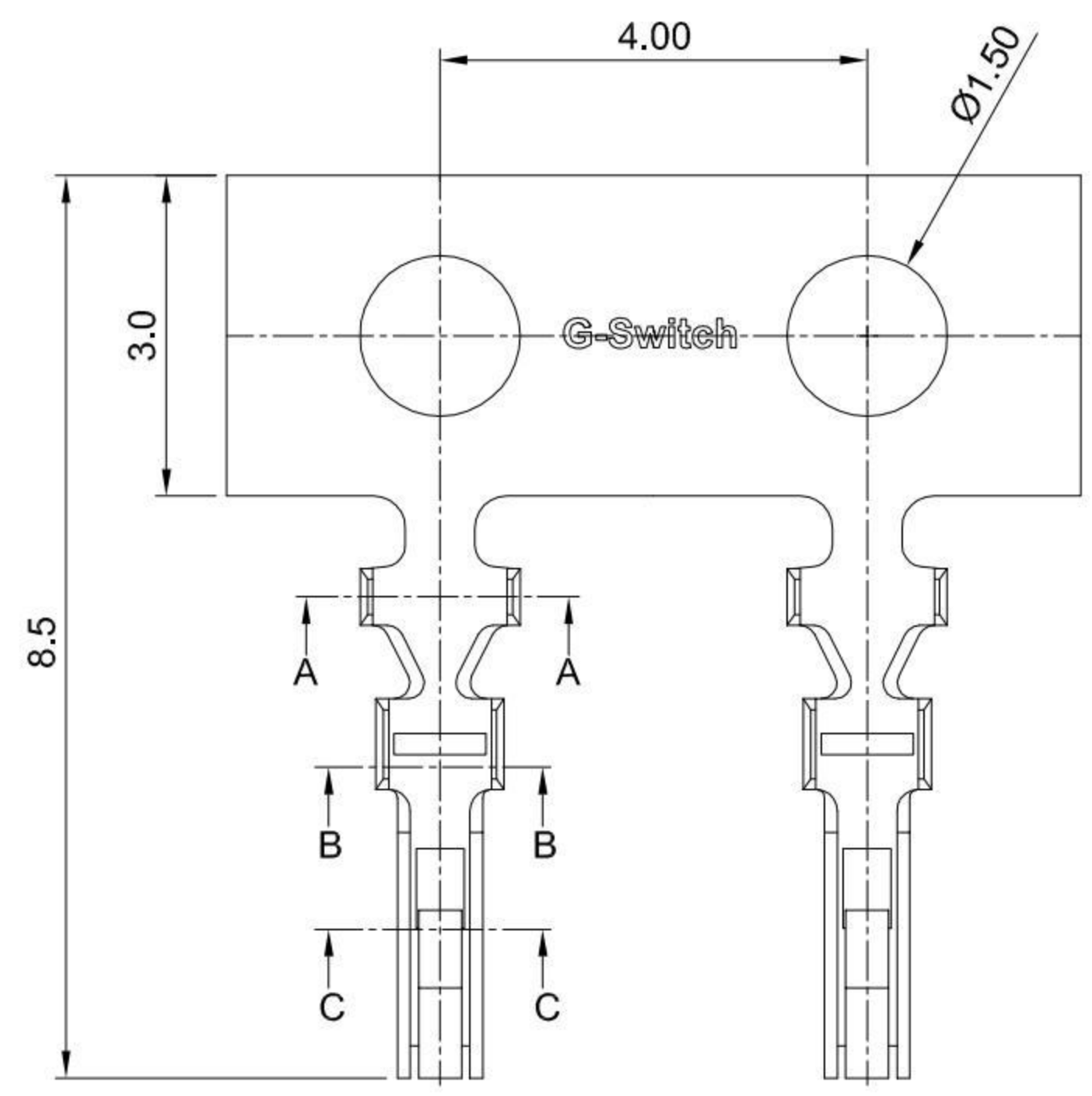
1

2

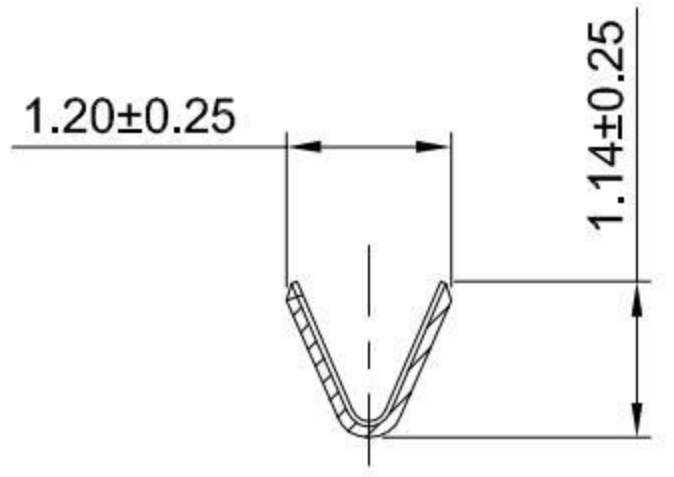
3

4

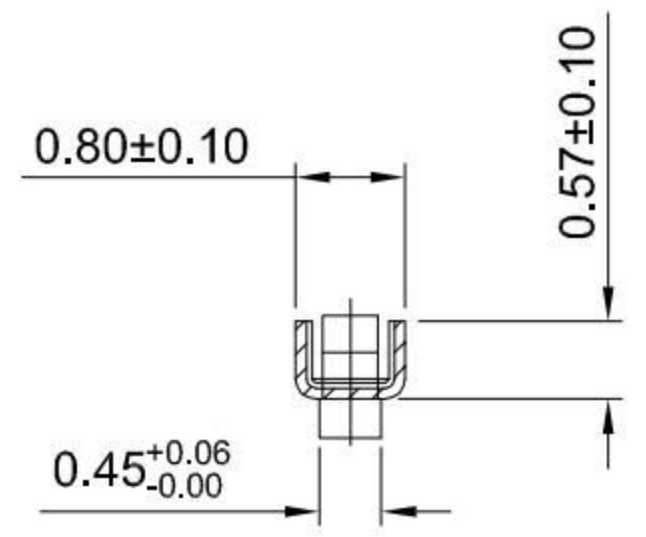
5



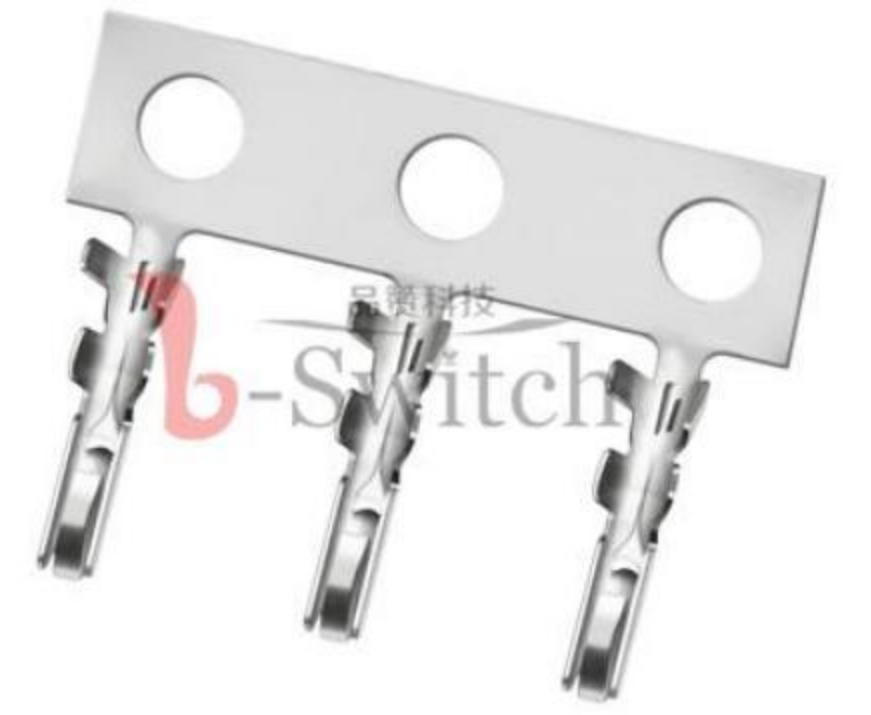
SECTION:A-A



SECTION:B-B



SECTION:C-C



GT-A1257 T F -X XX 1

G-Switch
Series No
Connector T-Terminal

Terminal Plating BT-Bright Tin
Metal P-Phosphor Bronze
F-Female

- G-Switch Specification:**
- 1.Current rated: 1.0A AC/DC
 - 2.Voltage rating: 50V AC/DC
 - 3.Withstanding voltage: 500V AC
 - 4.Contact resistance: 30mΩ max.
 - 5.Insulation resistance: 100MΩ min
 - 6.Durability cycle: 30Cycles
 - 7.Removal force: 0.50kgf/Pin min
 - 8.Operating temperature range: -25°C ~ +85°C

GT-A1257TF-PBT1	Phosphor Bronze	Bright Tin	AWG#26~32	1.00mm(Max)	25000
Part NO	Material	Plating	Wire Size	Insulation O.D	Reel/PCS



SCALE: 1:1 UNIT: mm
 SIZE: A4

Unless otherwise General Tolerance:

X	±0.40
X.x	±0.30
X.xx	±0.20
X*	±5°
X.x°	±3°

Title: Terminal 1.25mm Pitch GH Crimp Style

Molde Code: GT-A1257TF-XXX1

DRAWN	CHECKED	APPROVED	DATE
Hu	Chen	Chen	2022.12.28



REV: A0 SHEET: 1/1

A B C D E