

GT-A2012 T F -X XX 1

G-Switch

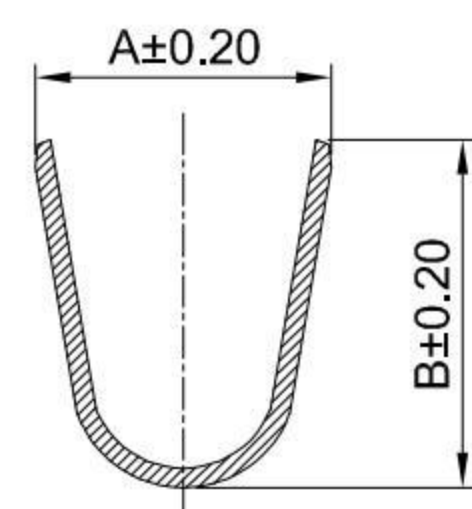
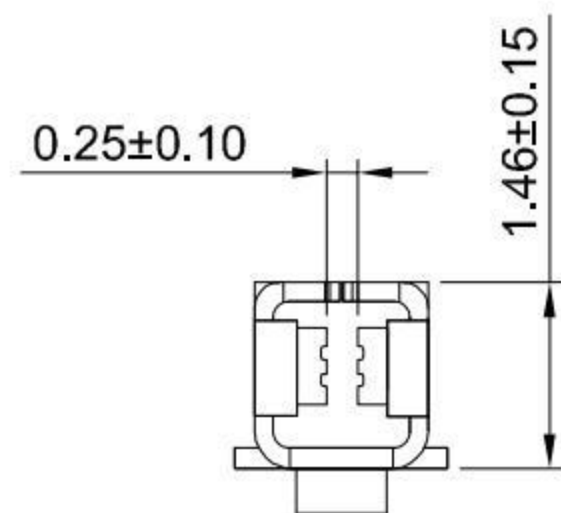
Series No

Connector
T-Terminal

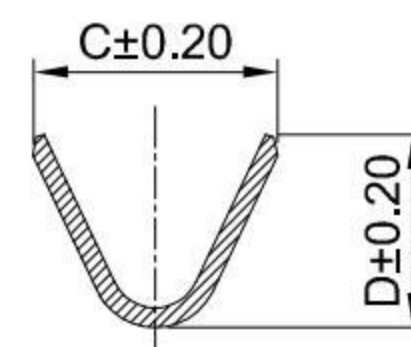
Terminal Plating
BT-Bright Tin

Metal
P-Phosphor Bronze

F-Female



SECTION:A-A



SECTION:B-B

G-Switch Specification:

1. Current rated: 3.0A AC/DC
2. Voltage rating: 250V AC/DC
3. Withstanding voltage: 800V AC
4. Contact resistance: 10mΩ max.
5. Insulation resistance: 1000MΩ min
6. Durability cycle: 30Cycles
7. Removal force: 1.00kgf/Pin min
8. Operating temperature range: -25°C ~ +85°C

GT-A2012TF-PBT3	Phosphor bronze	Bright Tin	2.10	1.85	1.15	1.10	AWG#26~#30	1.30mm(max)	5000
GT-A2012TF-PBT2	Phosphor bronze	Bright Tin	2.20	2.40	1.65	1.30	AWG#24~#28	1.40mm(max)	5000
GT-A2012TF-PBT1	Phosphor bronze	Bright Tin	2.30	2.70	1.90	1.50	AWG#22~#26	1.50mm(Max)	5000
Part NO	Material	Plating	A	B	C	D	Wire Size	Insulation O.D	Reel/PCS



SCALE: 1:1 UNIT: mm

SIZE: A4

Unless otherwise
General Tolerance:
X ±0.40
X.x ±0.30
X.xx ±0.20
X* ±5°
X.x° ±3°

Title: Terminal 2.00mm Pitch PUD Crimp Style

Molde Code: GT-A2012TF-XXXX

DRAWN	CHECKED	APPROVED	DATE
Hu	Chen	Chen	2021.10.20



REV: A0 SHEET: 1/1