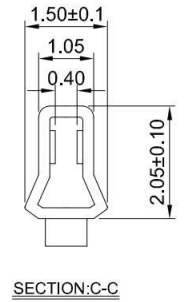
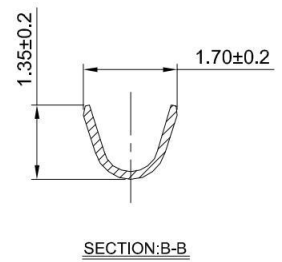
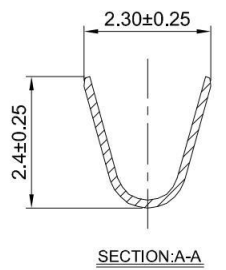
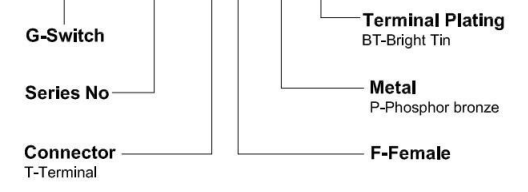


GT-A2001 T F -X XX 1



- G-Switch Specification:**
- 1.Current rated: 2.0A AC/DC
  - 2.Voltage rating: 100V AC/DC
  - 3.Withstanding voltage: 800V AC
  - 4.Contact resistance: 10mΩ max.
  - 5.Insulation resistance: 1000MΩ min
  - 6.Durability cycle: 30Cycles
  - 7.Removal force: 1.20kgf/Pin min
  - 8.Operating temperature range: -25°C ~ +85°C

GT-A2001TF-PBT1	Phosphor bronze	Bright Tin	AWG#22~28	1.50mm(Max)	12000
Part NO	Material	Plating	Wire Size	Insulation O.D	Reel/PCS



SCALE: 1:1	UNIT: mm
SIZE: A4	
Unless otherwise General Tolerance:	
X	±0.40
X.x	±0.30
X.xx	±0.20
X°	±5°
X.x°	±3°

Title: Terminal 2.00mm Pitch PH Crimp Style			
Molde Code: GT-A2001TF-XXX1			
DRAWN	CHECKED	APPROVED	DATE
Hu	Hu	Chen	2021.10.18



REV: A0	SHEET: 1/1
---------	------------