

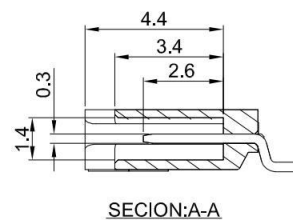
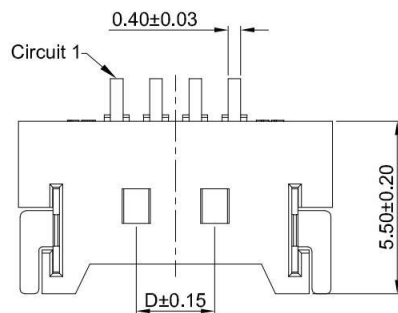
A

B

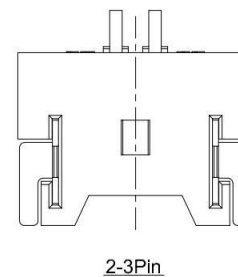
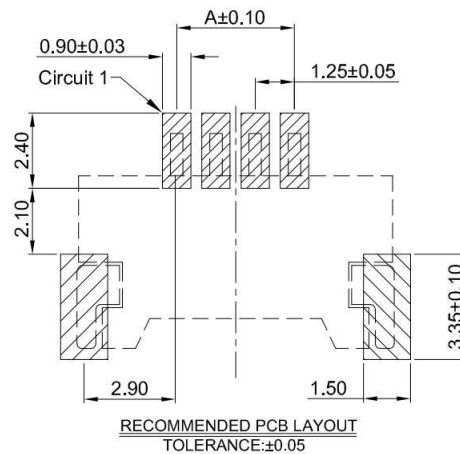
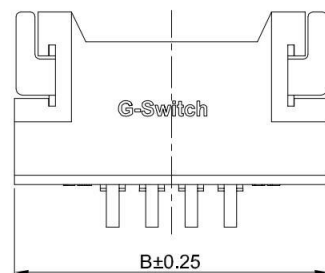
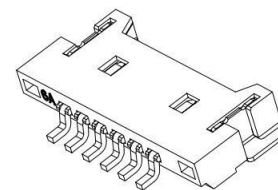
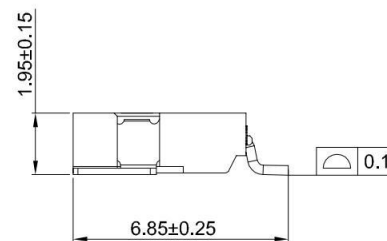
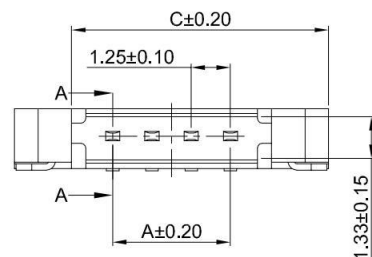
C

D

E

**G-Switch Specification:**

- 1.Current rated: 1.0A AC/DC
- 2.Voltage rating: 125V AC/DC
- 3.Withstanding voltage: 500V AC
- 4.Contact resistance: 20mΩ max.
- 5.Insulation resistance: 100MΩ min
- 6.Durability cycle: 25Cycles
- 7.Removal force: 0.80kgf/Pin min
- 8.Operating temperature range: -25°C ~ +85°C

**GT-A1254 W R S-1 XX X XX 0X****G-Switch****Series No****Connector**  
W-Wafer**Angle**  
R-90°**Termipoint**  
S-SMT**Type**  
01-LCP RoHS+HF  
02-PA6T RoHS**Terminal Plating**  
BT-Bright Tin  
11-All G/F**Housing Colour**  
S-Nature**Pin Q' PY**  
02~20**Row NO**  
1-Single Row**Ordering Information:**

Circuit	Dimensions(mm)				Circuit	Dimensions(mm)			
	A	B	C	D		A	B	C	D
02	---	7.40	3.87	---	12	13.75	19.90	16.37	12.50
03	2.50	8.65	5.12	---	13	15.00	21.15	17.62	13.75
04	3.75	9.90	6.37	2.50	14	16.25	22.40	18.87	15.00
05	5.00	11.15	7.62	3.75	15	17.50	23.65	20.12	16.25
06	6.25	12.40	8.87	5.00	16	18.75	24.90	21.37	17.50
07	7.50	13.65	10.12	6.25	17	20.00	26.15	22.62	18.75
08	8.75	14.90	11.37	7.50	18	21.25	27.40	23.87	20.00
09	10.00	16.15	12.62	8.75	19	22.50	28.65	25.12	21.25
10	11.25	17.40	13.87	10.00	20	23.75	29.90	26.37	22.50
11	12.50	18.65	15.12	11.25	---	---	---	---	---

SCALE: 1:1 UNIT: mm

SIZE: A4

Unless otherwise  
General Tolerance:

X	±0.40
X.x	±0.30
X.xx	±0.20
X°	±5°
X.x°	±3°

Title: Wafer 1.25mm Pitch 90° SMT Type  
Single Row Connector

Molde Code: GT-A1254WRS-1XXXXX01

DRAWN	CHECKED	APPROVED	DATE
Hu	Chen	Chen	2022.12.28

品赞科技®  
**b-Switch**  
www.dg-switch.com

REV: A0

SHEET: 1/1

3	SOLDER TABS	PHOSPHOR BRONZE	All G/F /BRIGHT Tin
2	CONTACT	PHOSPHOR BRONZE	All G/F /BRIGHT Tin
1	HOUSING	PA6T,94V-0/LCP,94V-0	NATURE
NO.	PART NAME	MATERIAL	REMARK



**RoHS**  
Compliant  
EU RoHS Standards



A

B

C

D

E