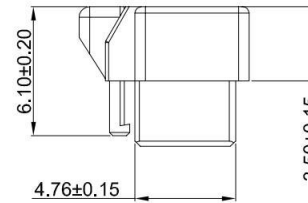
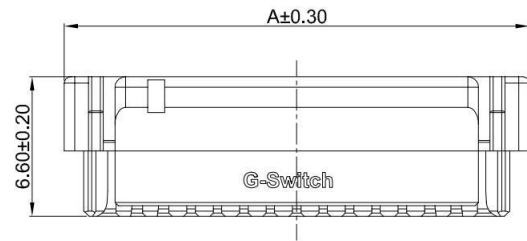


**GT-A1259 H M -2 XX X 01**

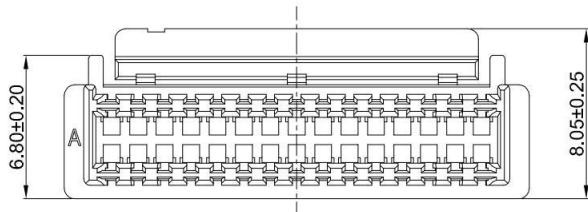
**G-Switch**  
**Series No**  
**Connector**  
 H-Housing  
**M-Male**

**Housing Colour**  
 W-White  
**Pin Q' PY**  
 10-40  
**Row NO**  
 2-Dual Rows



**G-Switch Specification:**

- 1.Current rated: 1.0A AC/DC
- 2.Voltage rating: 50V AC/DC
- 3.Withstanding voltage: 500V AC
- 4.Contact resistance: 50mΩ max.
- 5.Insulation resistance: 100MΩ min
- 6.Durability cycle: 30Cycles
- 7.Removal force: 0.30kgf/Pin min
- 8.Operating temperature range: -25°C ~ +85°C



**Ordering Information:**

Circuit	Dimensions(mm)		Circuit	Dimensions(mm)	
	A	B		A	B
10	9.50	5.00	26	19.50	15.00
12	10.75	6.25	28	20.75	16.25
14	12.00	7.50	30	22.00	17.50
16	13.25	8.75	32	23.25	18.75
18	14.50	10.00	34	24.50	20.00
20	15.75	11.25	36	25.75	21.25
22	17.00	12.50	38	27.00	22.50
24	18.25	13.75	40	28.25	23.75

1	HOUSING	PA66,94V-0	WHITE
NO.	PART NAME	MATERIAL	REMARK



SCALE: 1:1 UNIT: mm  
 SIZE: A4

Unless otherwise  
 General Tolerance:  
 X ±0.40  
 X.x ±0.30  
 X.xx ±0.20  
 X° ±5°  
 X.x° ±3°

Title: Housing 1.25mm Pitch GHD Dual Rows Male

Molde Code: GT-A1259HM-2XXX01

DRAWN	CHECKED	APPROVED	DATE
Hu	Hu	Chen	2021.10.20



REV: A0 SHEET: 1/1