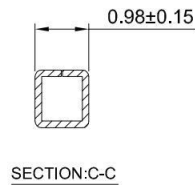
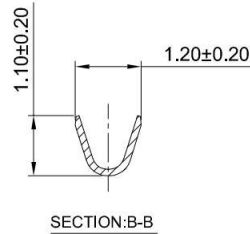
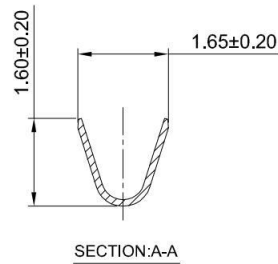
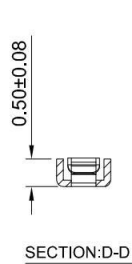


GT-A1259 T F -X XX 1

G-Switch
Series No
Connector
Terminal Plating
 BT-Bright Tin
 11-All G/F
Metal
 P-Phosphor Bronze
F-Female
 T-Terminal



G-Switch Specification:

- 1.Current rated: 1.0A AC/DC
- 2.Voltage rating: 50V AC/DC
- 3.Withstanding voltage: 500V AC
- 4.Contact resistance: 50mΩ max.
- 5.Insulation resistance: 100MΩ min
- 6.Durability cycle: 30Cycles
- 7.Removal force: 0.30kgf/Pin min
- 8.Operating temperature range: -25°C ~ +85°C

GT-A1259TF-PBT1	Phosphor Bronze	Bright Tin	AWG#26~32	1.00mm(Max)	20000
GT-A1259TF-P111	Phosphor Bronze	All G/F	AWG#26~32	1.00mm(Max)	20000
Part NO	Material	Plating	Wire Size	Insulation O.D	Reel/PCS



SCALE: 1:1 UNIT: mm
 SIZE: A4

Unless otherwise
 General Tolerance:
 X ±0.40
 X.x ±0.30
 X.xx ±0.20
 X° ±5°
 X.x° ±3°

Title: Terminal 1.25mm Pitch Crimp Style

Molde Code: GT-A1259TF-XXX1

DRAWN	CHECKED	APPROVED	DATE
Hu	Chen	Chen	2022.12.28



REV: A0 SHEET: 1/1