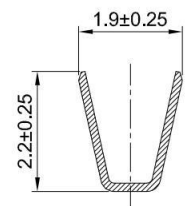
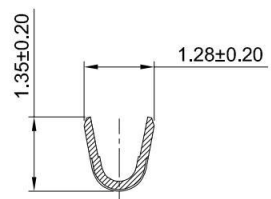


GT-A1515 T F -X XX 1

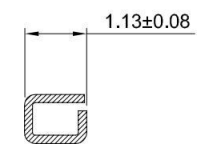
G-Switch
Series No
Connector
Terminal Plating
 BT-Bright Tin
 11-All G/F
Metal
 P-Phosphor Bronze
F-Female
T-Terminal



SECTION:A-A



SECTION:B-B



SECTION:C-C

- G-Switch Specification:**
- 1.Current rated: 2.0A AC/DC
 - 2.Voltage rating: 100V AC/DC
 - 3.Withstanding voltage: 500V AC
 - 4.Contact resistance: 20mΩ max.
 - 5.Insulation resistance: 500MΩ min
 - 6.Durability cycle: 50Cycles
 - 7.Removal force: 0.3kgf/Pin min
 - 8.Operating temperature range: -40°C ~ +125°C

GT-A1515TF-PBT1	Phosphor Bronze	Bright Tin	AWG#24~28	1.28mm(Max)	15000
GT-A1515TF-P111	Phosphor Bronze	All G/F	AWG#24~28	1.28mm(Max)	15000
Part NO	Material	Plating	Wire Size	Insulation O.D	Reel/PCS



SCALE: 1:1	UNIT: mm
SIZE: A4	
Unless otherwise General Tolerance:	
X	±0.40
X.x	±0.30
X.xx	±0.20
X°	±5°
X.x°	±3°

Title: Terminal 1.5mm Pitch Crimp Style			
Molde Code: GT-A1515TF-XXX1			
DRAWN	CHECKED	APPROVED	DATE
Hu	Chen	Chen	2022.12.28



REV: A0	SHEET: 1/1
---------	------------