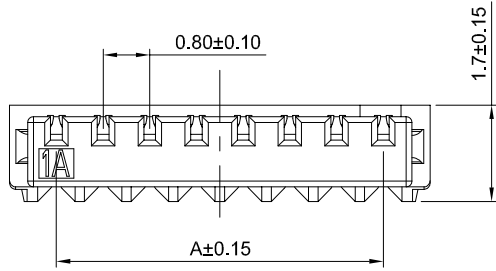


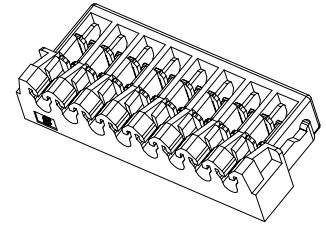
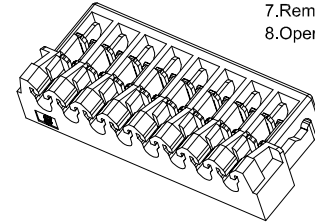
A B C D E

1

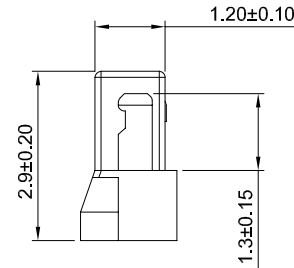
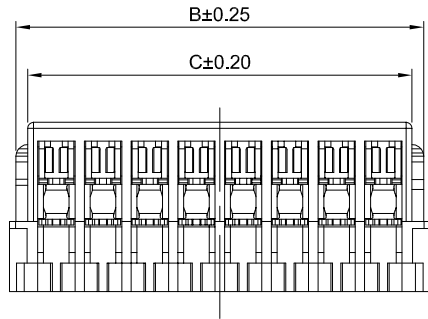


G-Switch Specification:

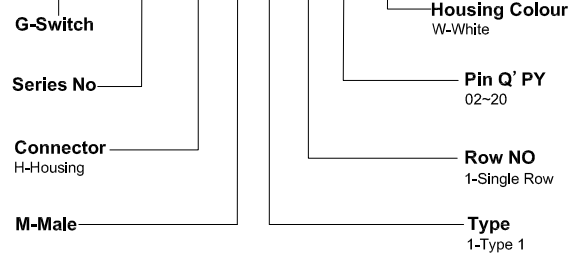
- 1.Current rated: 0.5A AC/DC
- 2.Voltage rating: 30V AC/DC
- 3.Withstanding voltage: 200V AC
- 4.Contact resistance: 30mΩ max.
- 5.Insulation resistance: 100MΩ min
- 6.Durability cycle: 30Cycles
- 7.Removal force: 0.50kgf/Pin min
- 8.Operating temperature range: -40°C ~ +105°C



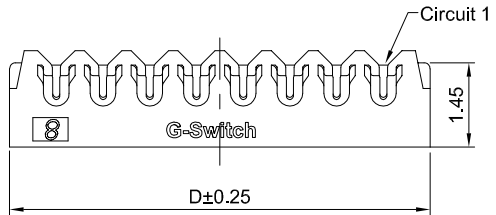
2



GT-D0801 H M 2 -1 XX X 01



3



Ordering Information:

Circuit	Dimensions(mm)				Circuit	Dimensions(mm)			
	A	B	C	D		A	B	C	D
02	--	2.18	1.78	2.40	12	8.80	10.18	9.78	10.40
03	1.60	2.98	2.58	3.20	13	9.60	10.98	10.58	11.20
04	2.40	3.78	3.38	4.00	14	10.40	11.78	11.38	12.00
05	3.20	4.58	4.18	4.80	15	11.20	12.58	12.18	12.80
06	4.00	5.38	4.98	5.60	16	12.00	13.38	12.98	13.60
07	4.80	6.18	5.78	6.40	17	12.80	14.18	13.78	14.40
08	5.60	6.98	6.58	7.20	18	13.60	14.98	14.58	15.20
09	6.40	7.78	7.38	8.00	19	14.40	15.78	15.38	16.00
10	7.20	8.58	8.18	8.80	20	15.20	16.58	16.18	16.80
11	8.00	9.38	8.98	9.60	--	--	--	--	--

4

NO.	PART NAME	MATERIAL	REMARK
2	CONTACT	PHOSPHOR BRONZE	All G/F
1	HOUSING	PA66,94V-0	WHITE



SCALE: 1:1 UNIT: mm
 SIZE: A4

Unless otherwise General Tolerance:
 X ±0.40
 X.x ±0.30
 X.xx ±0.20
 X° ±5°
 X.x° ±3°

Title: Housing 0.80mm Pitch SUR Single Row Male
 AWG#32- #34

Molde Code: GT-D0801HM2-1XXX01

DRAWN	CHECKED	APPROVED	DATE
Hu	Hu	Chen	2021.10.20



REV: A0 SHEET: 1/1

A B C D E

5

5