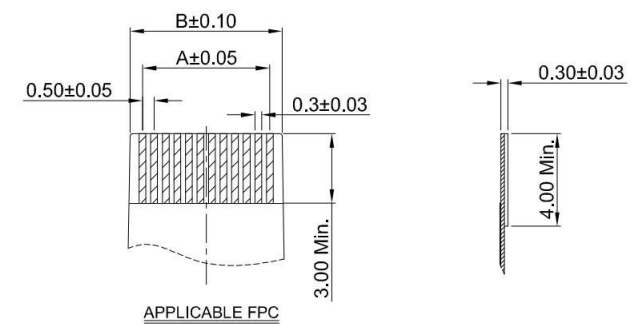
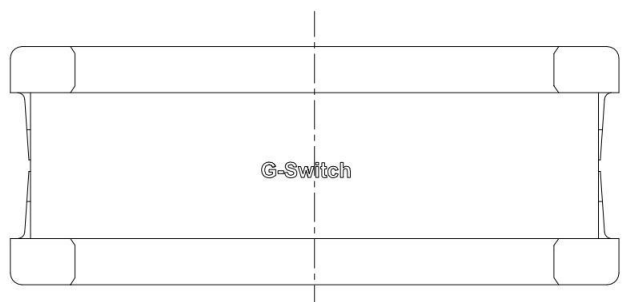
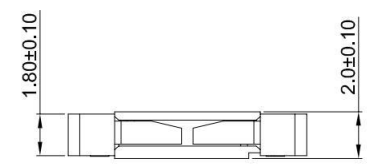
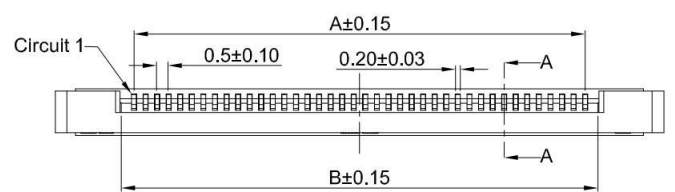


A B C D E



GT-F0521 A R 20 -XX X XX 02

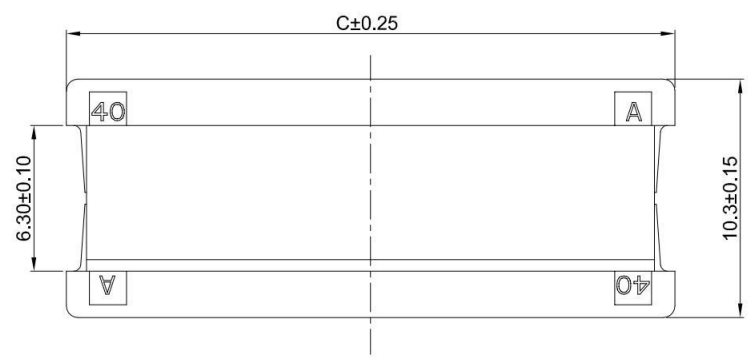
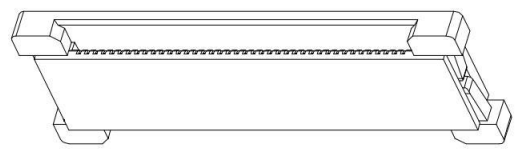
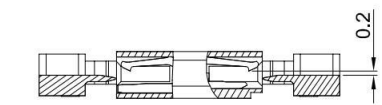
- G-Switch**
- Series No**
- Termipoint**
A-Air Docking
- Angle**
R-90°
- Terminal Plating**
BT-Bright Tin
- Housing Colour**
S-Nature
- Pin Q' PY**
06-60
- Height**
20-2.0mm



- G-Switch Specification:**
- Current rated: 0.5A AC/DC
 - Voltage rating: 50V AC/DC
 - Withstanding voltage: 500V AC for 1 min
 - Contact resistance: 40mΩ max.
 - Insulation resistance: 500MΩ min
 - Durability cycle: 20Cycles
 - Removal force: 0.03kgf/Pin min
 - Operating temperature range: -55°C ~ +85°C

Ordering Information:

Circuit	Dimensions(mm)			Circuit	Dimensions(mm)		
	A	B	C		A	B	C
06	2.50	3.60	9.30	40	19.50	20.60	26.30
20	9.50	10.60	16.30	50	24.50	25.60	31.30
24	11.50	12.60	18.30	60	29.50	30.60	36.30
30	14.50	15.60	21.30	---	---	---	---



3	CONTACT	BRASS	BRIGHT Tin
2	COVER	LCP,94V-0	BLACK
1	HOUSING	LCP,94V-0	NATURE
NO.	PART NAME	MATERIAL	REMARK



SCALE: 1:1 UNIT: mm
 SIZE: A4
 Unless otherwise General Tolerance:
 X ±0.40
 X.x ±0.30
 X.xx ±0.20
 X° ±5°
 X.x° ±3°

Title: FPC 0.50mm Pitch 90° Air Docking Type H2.0mm Connector
 Molde Code: GT-F0521AR20-XXXXX02
 DRAWN: JIANG CHECKED: HU APPROVED: CHEN DATE: 2021.06.28



REV: A0 SHEET: 1/1

A B C D E