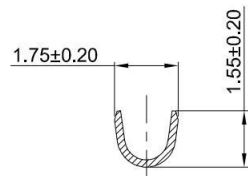
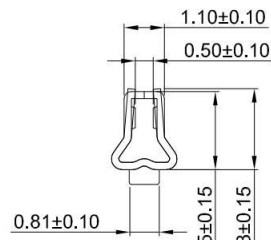


SECTION:A-A



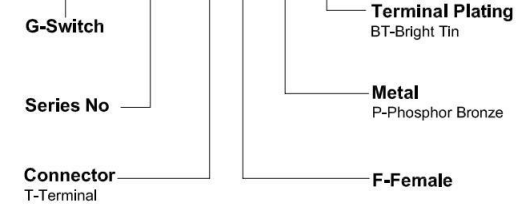
SECTION:B-B



SECTION:C-C



GT-A2508 T F -X XX 1



- G-Switch Specification:**
- 1.Current rated: 3.0A AC/DC
  - 2.Voltage rating: 250V AC/DC
  - 3.Withstanding voltage: 1000V AC
  - 4.Contact resistance: 10mΩ max.
  - 5.Insulation resistance: 1000MΩ min
  - 6.Durability cycle: 50Cycles
  - 7.Removal force: 2.0kgf/Pin min
  - 8.Operating temperature range: -25°C ~ +85°C

SCALE: 1:1 UNIT: mm  
 SIZE: A4

Unless otherwise General Tolerance:  
 X ±0.40  
 X.x ±0.30  
 X.xx ±0.20  
 X° ±5°  
 X.x° ±3°

Title: Terminal 2.50mm Pitch Crimp Style Female

Molde Code: GT-A2508TF-XXX1

DRAWN	CHECKED	APPROVED	DATE
Hu	Chen	Chen	2021.10.20



GT-A2508TF-PBT1	Phosphor bronze	Bright Tin	AWG#22~#26	1.60mm(Max)	8000
Part NO	Material	Plating	Wire Size	Insulation O.D	Reel/PCS



REV: A0 SHEET: 1/1