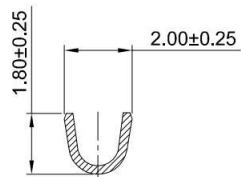
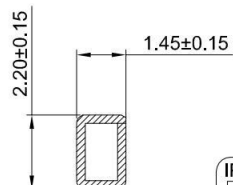


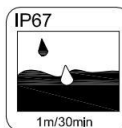
SECTION:A-A



SECTION:B-B



SECTION:C-C



GT-C2001 T M -X XX 1

G-Switch

Series No

Connector
T-Terminal

Terminal Plating
BT-Bright Tin
11-All G/F

Metal
P-Phosphor Bronze

M-Male

G-Switch Specification:

- 1.Current rated: 3.0A AC/DC
- 2.Voltage rating: 100V AC/DC
- 3.Withstanding voltage:1000V AC
- 4.Contact resistance: 10mΩ max.
- 5.Insulation resistance: 1000MΩ min
- 6.Durability cycle: 50Cycles
- 7.Removal force: 1.0kgf/Pin min
- 8.Operating temperature range: -40°C ~ +105°C

GT-C2001TM-P111	Phosphor bronze	All G/F	AWG#22~#26	1.60mm(Max)	10000
GT-C2001TM-PBT1	Phosphor bronze	Bright Tin	AWG#22~#26	1.60mm(Max)	10000
Part NO	Material	Plating	Wire Size	Insulation O.D	Reel/PCS



SCALE: 1:1 UNIT: mm
SIZE: A4

Unless otherwise
General Tolerance:
X ±0.40
X.x ±0.30
X.xx ±0.20
X° ±5°
X.x° ±3°

Title: Terminal 2.00mm Pitch JWPF
Crimp Style Male

Molde Code: GT-C2001TM-XXX1

DRAWN	CHECKED	APPROVED	DATE
Hu	Chen	Chen	2021.10.20



REV: A0 SHEET: 1/1