

GT-A2508 H M 1 -1 XX X 01

G-Switch

Series No

Connector  
H-Housing

M-Male

Housing Colour  
W-White

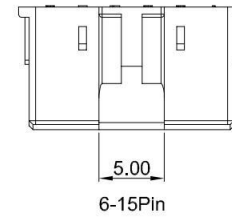
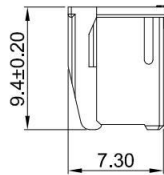
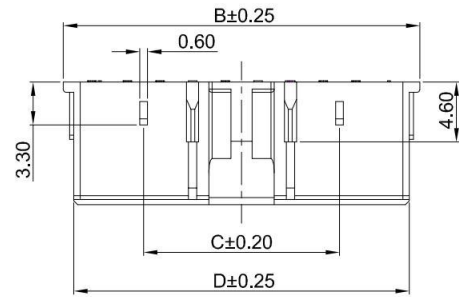
Pin Q' PY  
02-15

Row NO  
1-Single Row

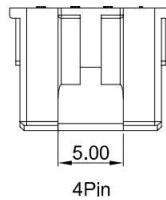
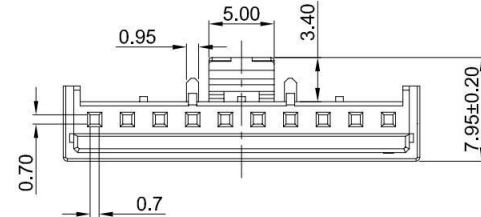
Type  
1-Type 1

**G-Switch Specification:**

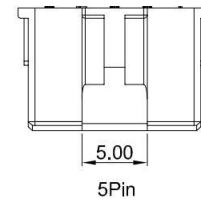
- 1.Current rated: 3.0A AC/DC
- 2.Voltage rating: 250V AC/DC
- 3.Withstanding voltage: 1000V AC
- 4.Contact resistance: 10mΩ max.
- 5.Insulation resistance: 1000MΩ min
- 6.Durability cycle: 50Cycles
- 7.Removal force: 2.0kgf/Pin min
- 8.Operating temperature range: -25°C ~ +85°C



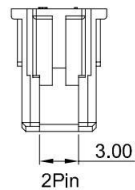
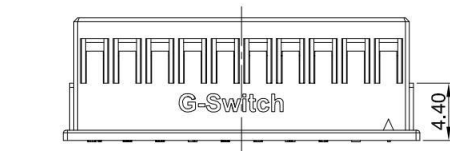
6-15Pin



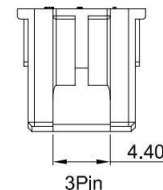
4Pin



5Pin



2Pin



3Pin

**Ordering Information:**

Circuit	Dimensions(mm)				Circuit	Dimensions(mm)			
	A	B	C	D		A	B	C	D
02	---	7.30	---	5.70	09	20.00	24.80	15.00	23.20
03	5.00	9.80	---	8.20	10	22.50	27.30	17.50	25.70
04	7.50	12.30	---	10.70	11	25.00	29.80	20.00	28.20
05	10.00	14.80	---	13.20	12	27.50	32.30	22.50	30.70
06	12.50	17.30	7.50	15.70	13	30.00	34.80	25.00	33.20
07	15.00	19.80	10.00	18.20	14	32.50	37.30	27.50	35.70
08	17.50	22.30	12.50	20.70	15	35.00	39.80	30.00	38.20

SCALE: 1:1 UNIT: mm

SIZE: A4

Unless otherwise  
General Tolerance:  
X ±0.40  
X.x ±0.30  
X.xx ±0.20  
X° ±5°  
X.x° ±3°

Title: Housing 2.50mm Pitch XA Single Row Male

Molde Code: GT-A2508HM1-1XXX01

DRAWN	CHECKED	APPROVED	DATE
Hu	Hu	Chen	2021.10.20



REV: A0 SHEET: 1/1

NO.	PART NAME	MATERIAL	REMARK
1	HOUSING	PA66,94V-0	WHITE



A

B

C

D

E