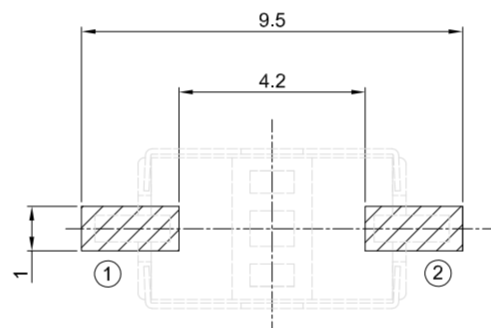
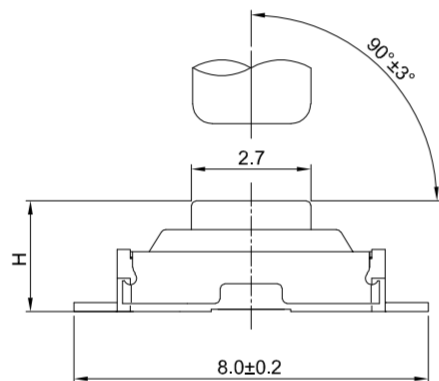


Keying Tip Tilt



RECOMMENDED PCB LAYOUT
TOLERANCE:±0.05

GT-TCA60X-HXXX-LX

Operating Force

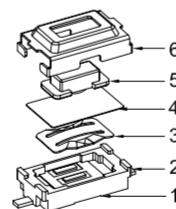
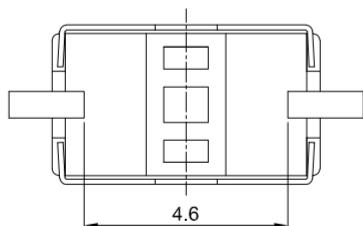
A=160gf
B=250gf
C=100gf

Switch Height(mm)

H025=2.50
H027=2.70

Switch Lifetime (Force)

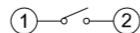
L05=50,000 Cycles
L1=100,000 Cycles



G-Switch Specification:

- Operating temperature range: -40°C ~ +85°C
- Rating: 50mA.12V DC
- Insulation resistance: 100MΩ min.100V DC
- Dielectric strength: 250V AC for 1 min
- Contact resistance: 100m Ω max.
- Travel: 0.25±0.1mm

NO.	PART NAME	MATERIAL	REMARK
6	COVER	STAINLESS STEEL	--
5	STEM	LCP	WHITE
4	TAPE	PI	--
3	CONTACT	STAINLESS STEEL	Ag PLATING
2	TERMINAL	COPPER ALLOY	Ag PLATING
1	BASE	HIGH TEMPERATURE PLASTIC	LCP BLACK



CIRCUIT DIAGRAM



SCALE: 1:1 UNIT: mm
SIZE: A4

Unless otherwise
General Tolerance:

X. ±0.40
X.x ±0.30
X.xx ±0.20
X* ±3°

Title: Vertical Tact Switch
Flat 6.1×3.7×Hmm

Molde Code: GT-TCA60X-HXXX-LX

DRAWN	CHECKED	APPROVED	DATE
Jiang	Xia	Chen	2025.02.25



REV: A0

SHEET: 1/1