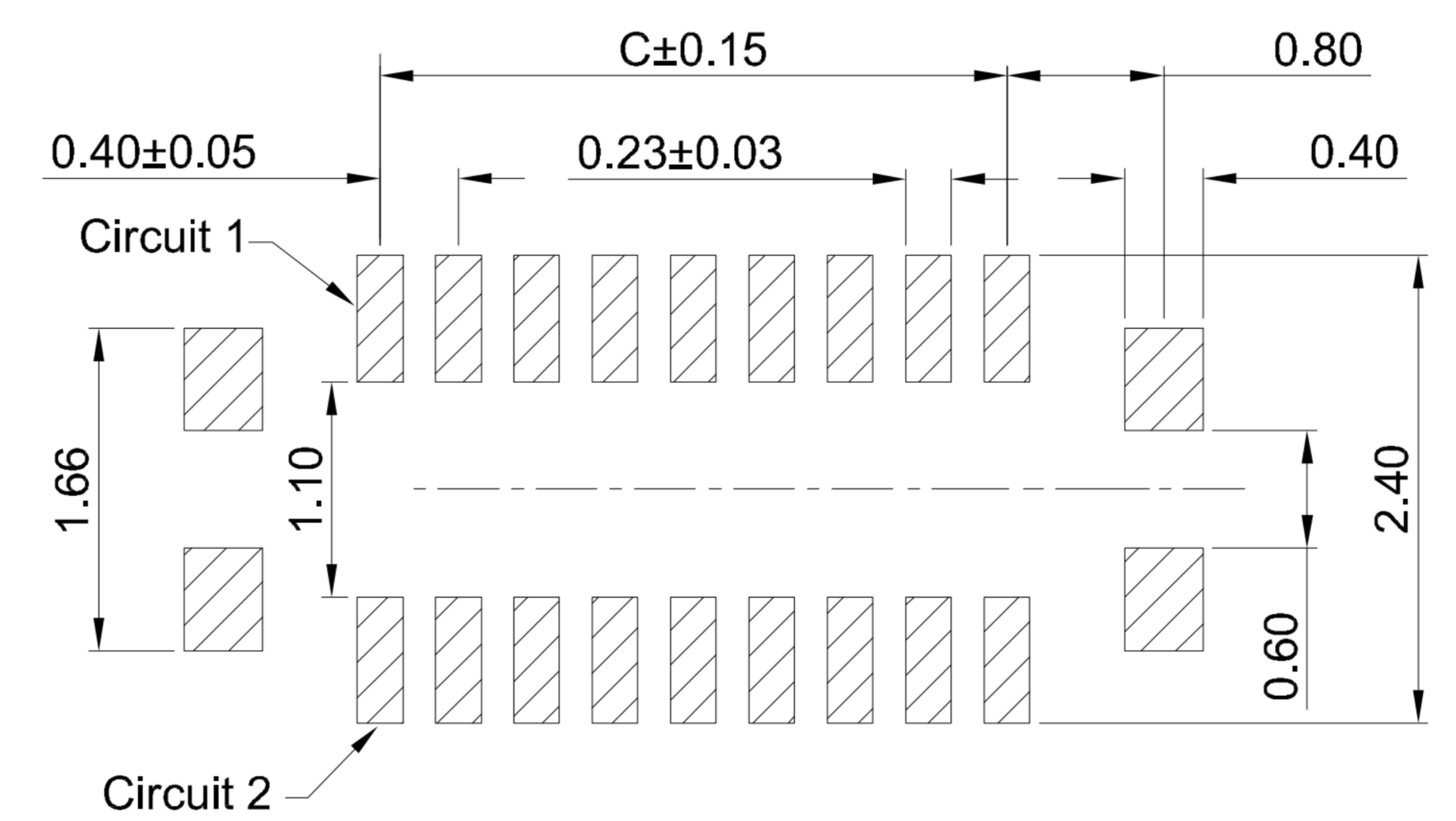
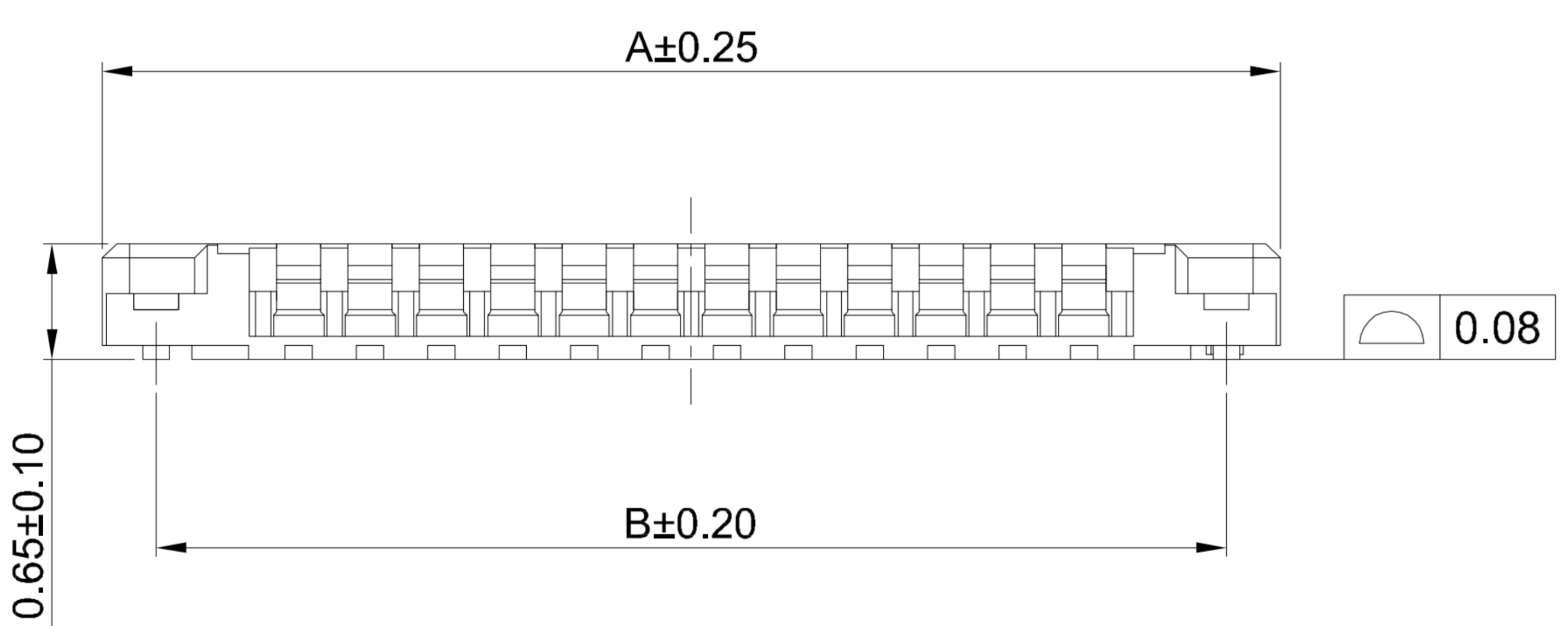


GT-B0401 M S V 07 -XX X XX 01

**G-Switch**  
**Series No**  
**M-Male**  
**Termpoint**  
 S-SMT  
**Angle**  
 V-180°

**Terminal Plating**  
 11-Au1u" All  
**Housing Colour**  
 B-Black  
**Pin Q' PY**  
 10~40  
**Height**  
 07-0.65mm



RECOMMENDED PCB LAYOUT  
 TOLERANCE:±0.05

- G-Switch Specification:**
- 1.Current rated: 0.3A AC/DC
  - 2.Voltage rating: 60V AC/DC
  - 3.Withstanding voltage: 150V AC
  - 4.Contact resistance: 90mΩ max.
  - 5.Insulation resistance: 1000MΩ min
  - 6.Durability cycle: 20 Cycles
  - 7.Removal force: 0.10kgf/Pin min
  - 8.Operating temperature range: -35°C ~ +85°C

**Ordering Information:**

Circuit	Dimension(mm)			Circuit	Dimension(mm)		
	A	B	C		A	B	C
10	3.80	3.20	1.60	24	6.60	6.00	4.40
12	4.20	3.60	2.00	30	7.80	7.20	5.60
14	4.60	4.00	2.40	34	8.60	8.00	6.40
16	5.00	4.40	2.80	40	9.80	9.20	7.60
20	5.80	5.20	3.60	--	--	--	--

NO.	PART NAME	MATERIAL	REMARK
3	SOLDER TABS	PHOSPHOR BRONZE	MATTE TIN
2	CONTACT	PHOSPHOR BRONZE	Au1u" ON ALL AREA
1	HOUSING	LCP,94V-0	BLACK



SCALE: 1:1 UNIT: mm  
 SIZE: A4

Unless otherwise  
 General Tolerance:  
 X ±0.40  
 X.x ±0.30  
 X.xx ±0.20  
 X° ±5°  
 X.x° ±3°

Title: BTB 0.40mm Pitch 180°  
 SMT Type Male H0.70mm

Molde Code: GT-B0401MSV07-XXXXX01

DRAWN	CHECKED	APPROVED	DATE
Hu	Chen	Chen	2022.12.28



REV: A0 SHEET: 1/1