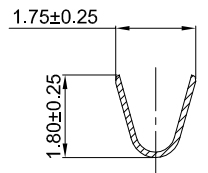
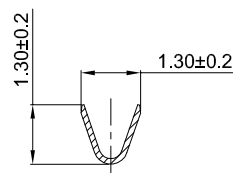


GT-A2001 T M -X XX 1

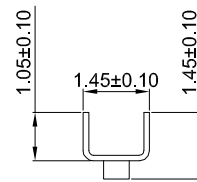
G-Switch
Series No
Connector
Terminal Plating
 BT-Bright Tin
Metal
 P-Phosphor bronze
M-Male
 T-Terminal



SECTION:A-A



SECTION:B-B



SECTION:C-C

G-Switch Specification:

- 1.Current rated: 2.0A AC/DC
- 2.Voltage rating: 100V AC/DC
- 3.Withstanding voltage: 800V AC
- 4.Contact resistance: 10mΩ max.
- 5.Insulation resistance: 1000MΩ min
- 6.Durability cycle: 30Cycles
- 7.Removal force: 1.20kgf/Pin min
- 8.Operating temperature range: -25°C ~ +85°C

SCALE: 1:1 UNIT: mm
 SIZE: A4

Title: Terminal 2.00mm Pitch PH Crimp Style

Unless otherwise
 General Tolerance:
 X ±0.40
 X.x ±0.30
 X.xx ±0.20
 X° ±5°
 X.x° ±3°

Molde Code: GT-A2001TM-XXX1

DRAWN	CHECKED	APPROVED	DATE
Hu	Chen	Chen	2021.10.18



REV: A0 SHEET: 1/1

GT-A2001TM-PBT1	Phosphor bronze	Bright Tin	AWG#24~28	1.30mm(Max)	16000
Part NO	Material	Plating	Wire Size	Insulation O.D	Reel/PCS

