

G-Switch Specification:

- 1. Current rated: 0.5A AC/DC
- 2. Voltage rating: 50V AC/DC
- 3. Withstanding voltage: 200V AC
- 4. Contact resistance: 20mΩ max.
- 5. Insulation resistance: 500MΩ min
- 6. Durability cycle: 20Cycles
- 7. Removal force: 0.04kgf/Pin min
- 8. Operating temperature range: -40°C ~ +85°C



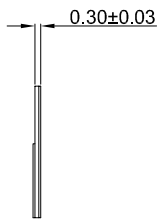
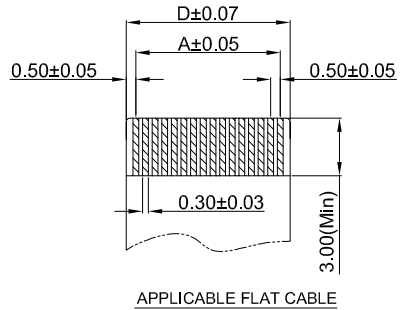
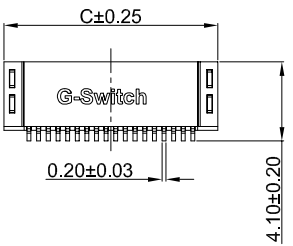
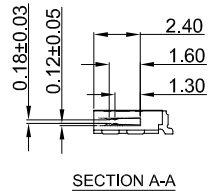
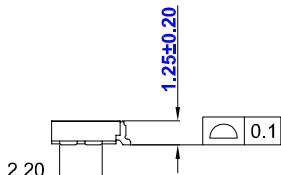
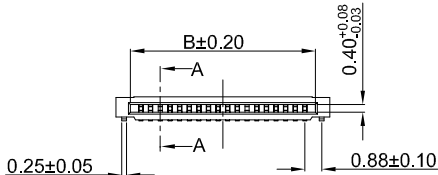
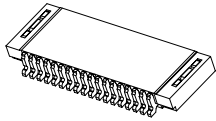
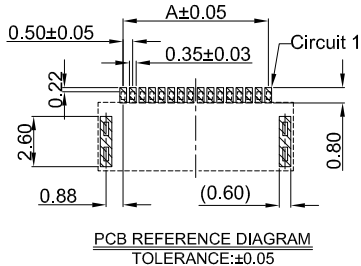
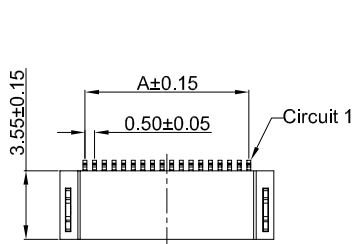
GT-F0525 S R 12 -XX X XX 01

G-Switch
Series No
Termipoint
 S-SMT
Angle
 R-90°

Terminal Plating
 11-Au 1u"
Housing Colour
 S-Nature
Pin Q' PY
 04~45
Height
 12-1.25mm

Ordering Information:

Circuit	Dimensions(mm)				Circuit	Dimensions(mm)			
	A	B	C	D		A	B	C	D
04	1.50	2.60	4.10	2.50	25	12.00	13.10	14.60	13.00
05	2.00	3.10	4.60	3.00	26	12.50	13.60	15.10	13.50
06	2.50	3.60	5.10	3.50	27	13.00	14.10	15.60	14.00
07	3.00	4.10	5.60	4.00	28	13.50	14.60	16.10	14.50
08	3.50	4.60	6.10	4.50	29	14.00	15.10	16.60	15.00
09	4.00	5.10	6.60	5.00	30	14.50	15.60	17.10	15.50
10	4.50	5.60	7.10	5.50	31	15.00	16.10	17.60	16.00
11	5.00	6.10	7.60	6.00	32	15.50	16.60	18.10	16.50
12	5.50	6.60	8.10	6.50	33	16.00	17.10	18.60	17.00
13	6.00	7.10	8.60	7.00	34	16.50	17.60	19.10	17.50
14	6.50	7.60	9.10	7.50	35	17.00	18.10	19.60	18.00
15	7.00	8.10	9.60	8.00	36	17.50	18.60	20.10	18.50
16	7.50	8.60	10.10	8.50	37	18.00	19.10	20.60	19.00
17	8.00	9.10	10.60	9.00	38	18.50	19.60	21.10	19.50
18	8.50	9.60	11.10	9.50	39	19.00	20.10	21.60	20.00
19	9.00	10.10	11.60	10.00	40	19.50	20.60	22.10	20.50
20	9.50	10.60	12.10	10.50	41	20.00	21.10	22.60	21.00
21	10.00	11.10	12.60	11.00	42	20.50	21.60	23.10	21.50
22	10.50	11.60	13.10	11.50	43	21.00	22.10	23.60	22.00
23	11.00	12.10	13.60	12.00	44	21.50	22.60	24.10	22.50
24	11.50	12.60	14.10	12.50	45	22.00	23.10	24.60	23.00



3	SOLDER TABS	BRASS	ALL Au 1u"
2	CONTACT	PHOSPHOR BRONZE	ALL Au 1u"
1	HOUSING	LCP,94V-0	NATURE
NO.	PART NAME	MATERIAL	REMARK



SCALE: 1:1 UNIT: mm
 SIZE: A4

Unless otherwise General Tolerance:
 X ±0.40
 X.x ±0.30
 X.xx ±0.20
 X* ±5°
 X.x° ±3°

Title: FPC 0.50mm Pitch 90° SMT Type H1.25mm Connector

Molde Code: GT-F0525SR12-XXXXX01

DRAWN	CHECKED	APPROVED	DATE
Hu	Hu	Chen	2022.12.28



REV: A0 SHEET: 1/1