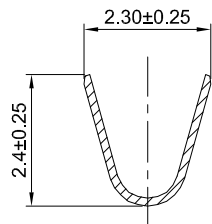
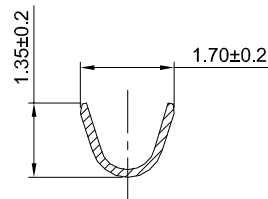


GT-A2001 T F -X XX 1

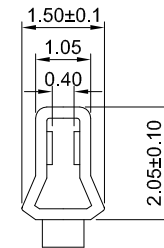
G-Switch
Series No
Connector
Terminal Plating
 BT-Bright Tin
Metal
 P-Phosphor bronze
F-Female
 T-Terminal



SECTION:A-A



SECTION:B-B



SECTION:C-C

G-Switch Specification:

- 1.Current rated: 2.0A AC/DC
- 2.Voltage rating: 100V AC/DC
- 3.Withstanding voltage: 800V AC
- 4.Contact resistance: 10mΩ max.
- 5.Insulation resistance: 1000MΩ min
- 6.Durability cycle: 30Cycles
- 7.Removal force: 1.20kgf/Pin min
- 8.Operating temperature range: -25°C ~ +85°C

| | | | | | |
|-----------------|-----------------|------------|-----------|----------------|----------|
| GT-A2001TF-PBT1 | Phosphor bronze | Bright Tin | AWG#22~28 | 1.50mm(Max) | 12000 |
| Part NO | Material | Plating | Wire Size | Insulation O.D | Reel/PCS |



SCALE: 1:1 UNIT: mm
 SIZE: A4

Unless otherwise
 General Tolerance:
 X ±0.40
 X.x ±0.30
 X.xx ±0.20
 X° ±5°
 X.X° ±3°

Title: Terminal 2.00mm Pitch PH Crimp Style

Molde Code: GT-A2001TF-XXX1

| | | | |
|-------|---------|----------|------------|
| DRAWN | CHECKED | APPROVED | DATE |
| Hu | Chen | Chen | 2021.10.18 |



REV: A0 SHEET: 1/1