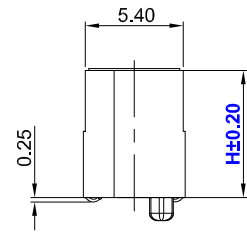
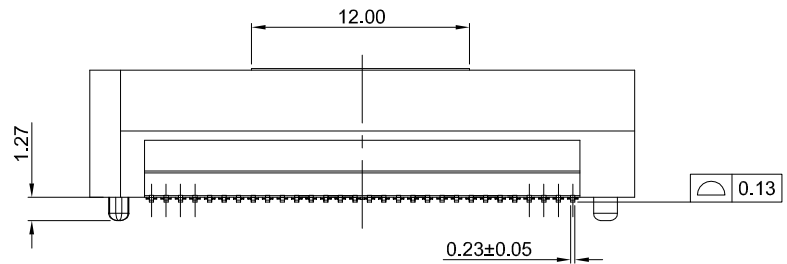


GT-B0803 F S V XX -XX X XX 01

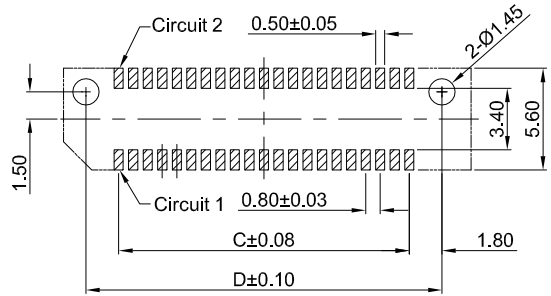
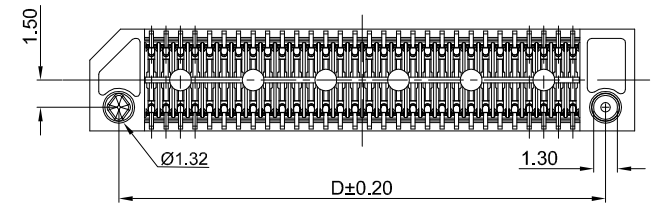
G-Switch
Series No
F-Female
Termpoint
 S-SMT
Angle
 V-180°

Terminal Plating
 04-Au10u"
Housing Colour
 B-Black
Pin Q' PY
 10-200
Height
 50-5.10mm
 70-7.00mm
 90-9.00mm



G-Switch Specification:

1. Current rated: 1.4A AC/DC
2. Voltage rating: 225V AC/DC
3. Withstanding voltage: 675V AC
4. Contact resistance: 15mΩ Max.
5. Insulation resistance: 5000MΩ min
6. Durability cycle: 30 Cycles
7. Removal force: 0.01kgf/Pin min
8. Operating temperature range: -55°C ~ +125°C



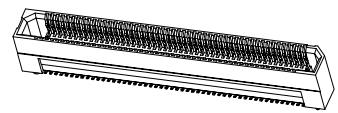
PCB REFERENCE DIAGRAM
 TOLERANCE:±0.05

Ordering Information:

Circuit	Dimensions(mm)			
	A	B	C	D
10	10.00	8.32	3.20	6.80
20	14.00	12.32	7.20	10.80
22	14.80	13.12	8.00	11.60
24	15.60	13.92	8.80	12.40
26	16.40	14.72	9.60	13.20
30	18.00	16.32	11.20	14.80
40	22.00	20.32	15.20	18.80
50	26.00	24.32	19.20	22.80
60	30.00	28.32	23.20	26.80
70	34.00	32.32	27.20	30.80
80	38.00	36.32	31.20	34.80
100	46.00	44.32	39.20	42.80
120	54.00	52.32	47.20	50.80
140	62.00	60.32	55.20	58.80
150	66.00	64.32	59.20	62.80
200	86.00	84.32	79.20	82.00

Height	H(mm)
5.00	5.10
7.00	7.00
9.00	9.00

Male(H)	Mated height(mm)			
	Female(H)			
2.0	5.00	7.00	9.00	11.00
3.0	8.00	--	--	--
5.0	10.00	12.00	14.00	--
8.0	13.00	15.00	17.00	--
9.0	14.00	16.00	18.00	--



NO.	PART NAME	MATERIAL	REMARK
2	CONTACT	PHOSPHOR BRONZE	Au10u" ON CONTACT AREA
1	HOUSING	LCP,94V-0	BLACK

SCALE: 1:1	UNIT: mm	Title: BTB 0.80mm Pitch 180° Dual Rows SMT Type Female Connector			
SIZE: A4		Molde Code: GT-B0803FSVXX-XXXXX01			
Unless otherwise General Tolerance:		DRAWN	CHECKED	APPROVED	DATE
X	±0.40	Hu	Chen	Chen	2022.12.28
X.x	±0.30				
X.xx	±0.20				
X*	±5°				
X.x°	±3°				



REV: A0	SHEET: 1/1
---------	------------