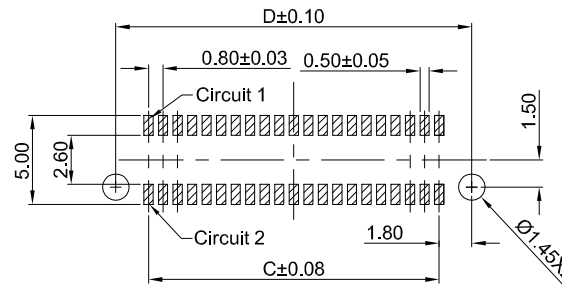
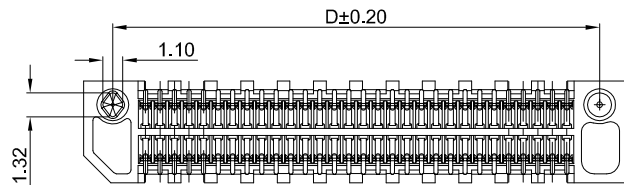
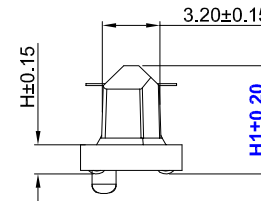
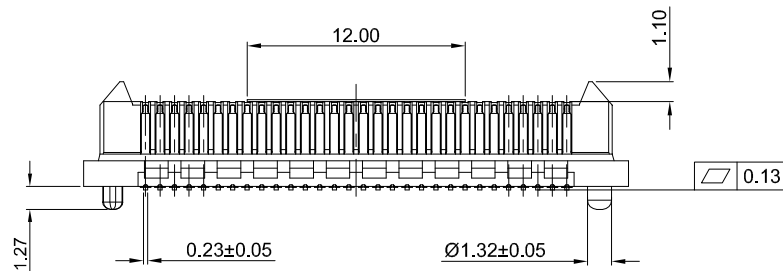


GT-B0803 M S V XX -XX X XX 01

- G-Switch**
- Series No**
- M-Male**
- Termpoint**
S-SMT
- Angle**
V-180°
- Terminal Plating**
04-Au10u"
- Housing Colour**
B-Black
- Pin Q' PY**
10~200
- Height**
20-2.00mm
30-3.00mm
50-5.00mm
80-8.00mm
90-9.00mm



PCB REFERENCE DIAGRAM
TOLERANCE:±0.05

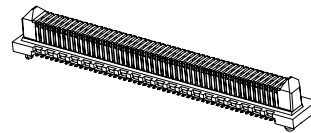
G-Switch Specification:

1. Current rated: 1.4A AC/DC
2. Voltage rating: 225V AC/DC
3. Withstanding voltage: 675V AC
4. Contact resistance: 15mΩ Max.
5. Insulation resistance: 5000MΩ min
6. Durability cycle: 30 Cycles
7. Removal force: 0.01kgf/Pin min
8. Operating temperature range: -55°C ~ +125°C

Ordering Information:

Circuit	Dimensions(mm)				Height	H	H1
	A	B	C	D			
10	10.00	8.20	3.20	6.80			
20	14.00	12.20	7.20	10.80	2.00	1.61	5.97
22	14.80	13.00	8.00	11.60	3.00	2.61	6.97
24	15.60	13.80	8.80	12.40	5.00	4.61	8.91
26	16.40	14.60	9.60	13.20	8.00	7.61	11.91
30	18.00	16.20	11.20	14.80	9.00	8.61	12.91
40	22.00	20.20	15.20	18.80	Mated height(mm)		
50	26.00	24.20	19.20	22.80			
60	30.00	28.20	23.20	26.80			
70	34.00	32.20	27.20	30.80			
80	38.00	36.20	31.20	34.80			
100	46.00	44.20	39.20	42.80			
120	54.00	52.20	47.20	50.80			
140	62.00	60.20	55.20	58.80			
150	66.00	64.20	59.20	62.80			
200	86.00	84.20	79.20	82.00			

Male(H)	Female(H)		
	5.0	7.0	9.0
2.0	7.00	9.00	11.00
3.0	8.00	-	-
5.0	10.00	12.00	14.00
8.0	13.00	15.00	17.00
9.0	14.00	16.00	18.00



SCALE: 1:1	UNIT: mm	Title: BTB 0.80mm Pitch 180° Dual Rows SMT Type Mate Connector	
SIZE: A4		Title: Molde Code: GT-B0803MSVXX-XXXXX01	
Unless otherwise General Tolerance:		DRAWN	CHECKED
X	±0.40	APPROVED	DATE
X.x	±0.30	Hu	Chen
X.xx	±0.20	Chen	2022.12.28
X°	±5°	REV: A0	SHEET: 1/1
X.x°	±3°		

